



**AUGER DRIVES
PDD - PD50**

SERVICE & REPAIR MANUAL

PM-000100-D

SINGLE & DOUBLE PLANETARY AUGER DRIVES

This manual is intended to be used by persons with reasonably mechanical skills and understanding of mechanical components.

This manual will assist in the disassembly and assembly of the above model Planetary Auger Drives. Item numbers, indicated in parentheses throughout this manual, refer to the exploded parts breakdown drawing. Individual customer specifications (mounting hood, output shaft etc.) may vary from exploded drawing and standard part numbers shown. Contact Digga Australia for enquiries.

For any spare or replacement parts, contact Digga Service and Spares or a local Digga representative. For identification purposes always try to have available the auger drive unit type and serial number. This information may be necessary for verification of any component part numbers. Component part numbers and/or manufacturing gear set numbers may be stamped on individual parts. This information may also be helpful in identifying replacement components.

CHANGING GEAR OIL

Change the gear oil after 6 months or 80 hours of moderate operation, then every 500 hours or 12 months whichever comes first.

THE GEARBOX OIL CAPACITY IS ENGRAVED ONTO THE SERIAL TAG LOCATED ON THE TOP OF THE HOOD.

Initial (Bed-in) oil change:

- The first oil change must be carried out within the first 50 hours of use under MODERATE OPERATING CONDITIONS. Thereafter, every 500 hours.
- Change the gear oil after the first 30 hours of SEVERE OPERATING CONDITIONS*. (i.e. severe ambient temperature conditions of +40°C or below 0°C, when augering, screw piling or core barrelling in hard ground.) Thereafter, every 300 hours.

	MODERATE OPERATING CONDITIONS	SEVERE OPERATING CONDITIONS*
FIRST OIL CHANGE	Within 3 months <u>OR</u> initial 50 hours of use	Within the first 30 hours of use
2ND OIL CHANGE PLUS SUBSEQUENT OIL CHANGES	After 500 hours or 12 months of use	After 300 hours of use thereafter (Drive requires a major stripdown, inspection and rebuild)

GEARBOX OIL:- - CASTROL ALPHASYN ISO SP 320 (MINERAL) OR EQUIVALENT

***SEVERE OPERATING CONDITIONS:- AMBIENT TEMPERATURES BELOW 0° (32°F) & ABOVE 40°C (104°F). WORKING IN HARD GROUND. EXTENDED AND CONTINUOUS HOURS OF OPERATION.**

NOTE



PREMIUM DRIVE UNIT RANGE (PDD-PD50 DRIVE UNITS)

Use quality extreme pressure gear oil
(EP ISO 320 GRADE - MINERAL OIL)

PD MODEL	OIL CAPACITY (LITRE)
PDD (Post Aug 2013)	0.25
PDD (Pre Aug 2013) - PD5	0.550
PD6 - PD12	1.45
PD15 - PD22	2.85
PD25 - PD50	4.8

It is also recommended that unit be partially disassembled to inspect gears and bearings at 2 year intervals. Oil changes must be performed by a Authorised Service Agent. Please Contact Digga for your nearest service location.

TABLE OF CONTENTS

LUBRICATION & MAINTENANCE.....	2
TABLE OF CONTENTS.....	3
BEFORE DISASSEMBLY.....	4
UNIT DISASSEMBLY PROCEDURE.....	4
OUTPUT SHAFT SUBASSEMBLY	5
PRIMARY PLANETARY SUBASSEMBLY.....	6
SECONDARY PLANETARY SUBASSEMBLY.....	7
UNIT REASSEMBLY.....	8
BEARING PRELOAD CHART.....	10
PDD (POST AUGUST 2013).....	11
PDD (PRE AUGUST 2013) /PDX/PDX2/PDX3 EXPLODED VIEW DRAWING.....	14
PD3/PD4/PD5 EXPLODED VIEW DRAWING.....	17
PD6/PD7 EXPLODED VIEW DRAWING.....	20
PD4HF/PD6HF EXPLODED VIEW DRAWING.....	23
PD8/PD10 EXPLODED VIEW DRAWING.....	25
PD8HF/PD10HF/PD12 EXPLODED VIEW DRAWING.....	28
PD15/PD18/PD22 EXPLODED VIEW DRAWING (PRE APRIL 2011).....	31
PD15/PD18/PD22 EXPLODED VIEW DRAWING (POST APRIL 2011).....	34
PD25/PD30/PD40/PD50 EXPLODED VIEW DRAWING.....	37
DRIVE UNIT DECALS	40
SWING CONTROL SYSTEM.....	43
CHANGING THE OIL	44
CHANGING THE SHAFT SEAL	45
REMOVAL AND INSTALLATION OF HOOD CYLINDERS.....	48
REMOVAL AND INSTALLATION OF AFT DAMPNERS.....	49
PD3 – PD4 SCS EXPLODED VIEW DRAWINGS.....	50
PD5 – PD7 SCS EXPLODED VIEW DRAWINGS.....	54
PD8 – PD10 SCS EXPLODED VIEW DRAWINGS.....	58
PD8HF – PD10HF SCS EXPLODED VIEW DRAWINGS.....	60
PD12 SCS EXPLODED VIEW DRAWINGS.....	62
PD15 – PD22 SCS EXPLODED VIEW DRAWINGS.....	64
PD25 – PD50 SCS EXPLODED VIEW DRAWINGS.....	66
CONTACT INFORMATION.....	68

BEFORE DISASSEMBLY

In the PDD-PD12 series, there is one single primary planetary gear set. In the PD15-PD22 series there is a primary and a secondary stack planetary gear set using a common ring gear. In the PD25 – PD50 series there are primary and secondary individual gear sets.

UNIT DISASSEMBLY PROCEDURE

All parts should be inspected as they are removed from unit. Scribe or mark a line across the assembly mounting case, ring gear, and cover joints on outside of gearbox to assure proper orientation of hood assembly, oil fill/ drain plug, motor mounting, etc., as the unit is reassembled.

1. Remove outer ring of bolts (refer to the relevant drive unit- diagram) from underside of gearbox assembly. Lift hood from gearbox assembly. Remove drain plug and drain oil.



CAUTION: ON PDD - PDX3 THE HOOD BOLTS ALSO HOLD THE GEARBOX TOGETHER. TAKE PRECAUTIONS WHEN REMOVING THE HOOD THAT THE GEARBOX DOES NOT COME APART. FOR THESE DRIVE UNITS DISREGARD REMOVE INNER RING OF BOLTS IN STEP 2. ON PD6 – PD7 THERE ARE 2 EXTRA BOLTS 180 DEGREES APART IN THE SAME CIRCLE OF BOLTS WHICH HOLDS THE DRIVE UNITS HOOD ON, DO NOT REMOVE THESE BOLTS WHEN REMOVING HOOD , REFER TO PD6 – PD7 DRAWING PAGE 7.

2. Remove inner ring of bolts and nyloc nuts (Refer to the relevant drive unit- diagram). Remove hydraulic motor from gearbox assembly. On PD8HF and above remove 4 motor retaining bolts to remove motor then inner ring of input housing retaining bolts.
3. The primary planetary assembly is now ready for removal. Lift outer ring gear, sun gear and gear set from the output housing.
4. For secondary planet removal, remove bolts holding interim housing, remove housing, and lift outer ring gear, sun gear and gear set from the output housing.
5. Most of the larger PD units will have a seal protector or carrier, remove this before moving to step #6.
6. On PDD – PD5, straighten locking tab which locates lock nut on the output shaft. On PD6 – PD50 remove key steel from keyway. Loosen lock nut using the required tool and remove locknut and locking tab.



CAUTION: RETAINING RING IS NO LONGER RETAINING OUTPUT SHAFT. TAKE PRECAUTIONS IF THE UNIT IS MOVED BECAUSE THE SHAFT MAY FALL OUT.

7. With output shaft down through a centre hole in hydraulic press table and unit supported by case, press shaft out by applying load to top end of shaft (internal end) until it passes through inner shaft bearing. Outer shaft bearing will come out of unit attached to shaft.

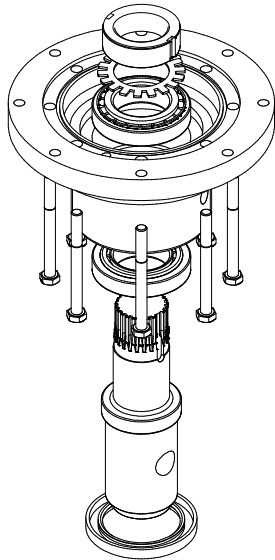


CAUTION: CARE SHOULD BE TAKEN NOT TO INJURE FEET OR DAMAGE OUTPUT SHAFT DURING THIS PROCEDURE.

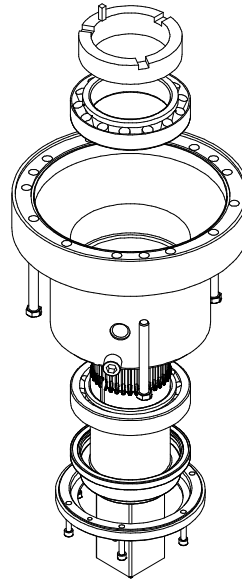
The unit is now disassembled into groups of parts and/or subassemblies. The area requiring repair or service should be identified by thorough inspection of the parts after they have been washed in solvent.

OUTPUT SHAFT SUBASSEMBLY

REFER TO APPROPRIATE EXPLODED VIEW DRAWING



PDD - PD5



PD25 - PD50

1. Inspect inner and outer bearing cups and cones. If either is damaged, the complete bearing assembly will need replacing.
2. Remove inner and outer bearing races from output housing with the appropriate tool.
3. Clean all foreign material from oil plug located on bottom of output housing. Add a small amount of pipe thread compound to thread on plug before installing it back into case.

PRIMARY PLANETARY SUBASSEMBLY

Rotate planet gear to check for any abnormal noises or roughness in the primary planet bearings. At the same time, inspect planet gears for any damage or worn teeth. If replacement or further inspection is required, proceed as follows. For PD15 - PD22 lift top gear set from bottom set then proceed as follows.

1. Remove circlips from top plate and remove plate.
2. Slide planet gears from carrier.



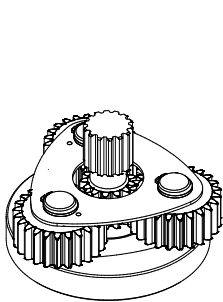
CAUTION: THE NEEDLE ROLLER BEARINGS ARE NOT CAGED THEREFORE CAN FALL FREE.

3. Remove bottom plate.
4. Check primary planet shafts, top and bottom plates, centre thrust washer, needle rollers and gears for any abnormal wear.
5. Replace any worn items.

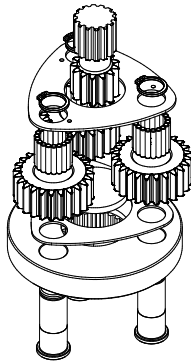


NOTE: IF THE PLANET SHAFTS ARE WORN, THE COMPLETE CARRIER ASSEMBLY MUST BE REPLACED. THE POSTS SHOULD NOT BE REPLACED IN AN EXISTING CARRIER.

6. Assembly: Fit centre thrust washer, fit bottom plate, fit gears, insert needle rollers into gears using lubricating oil, fit top washer and install circlips to posts place gear set into ring gear and place sun gear into gear set, ensure all turns freely.

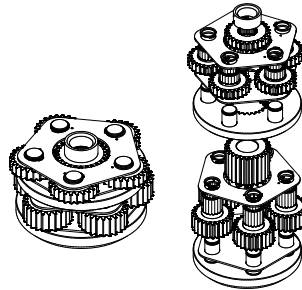


SUIT PD25-PD50



SUIT PD15-22 POST APRIL 2011

PRIMARY AND SECONDARY PLANETARY COMBINATION SUBASSEMBLY



SUIT PD15 - PD22 ONLY PRE APRIL 2011

SECONDARY PLANETARY SUBASSEMBLY



SUIT PD25-50

SUIT PD15-22 POST APRIL 2011

UNIT REASSEMBLY

1. Start with output housing assembly. Turn case upside down and position on table. Bottom seal end should be facing upward and install bearing cup with appropriate tooling.
2. Install bottom seal applying a smear of Loctite 243 thread locker to outside of seal and fit using appropriate tooling. Ensure seal is flush with the housing. Wipe off excess Loctite. Grease inner face of seal with EP grease.
3. Invert outer housing to upright position and place over securely positioned output shaft with splines facing upward. Using the appropriate tooling, assemble the output housing onto the output shaft.
4. Install bearing race to output housing with appropriate tooling. Install bearing ensuring correct installation technique. Only drive the bearing home via the inner cone of bearing. Hitting outer roller cage will damage the bearing.
5. While holding output shaft with one hand, rotate case to be certain it turns freely and smoothly. The slight resistance felt, if any, is due to shaft seal load (drag) on output shaft.
6. On PDD – PD5, install a new locking tab making sure tabs are facing upwards. Tab will also locate onto output shaft spline. Fit lock nut with chamfer facing downward and tension.
PDD – PD5 nut tension – 125ft/lbs (approx) PD6 – PD12 nut tension – 180ft/lbs (approx) PD15 – PD22 nut tension – 1000ft/lbs (approx) PD25 – PD50 nut tension – 1200ft/lbs (approx) Refer to (*"Bearing Preload Chart P.12" for correct lock nut tension.*)
7. Drive locking tab into the keyway of the output shaft.
8. PD6 – PD50 will have key steel instead of locking tab. Insert key after tensioning locking nut.



NOTE: IF THE BEARINGS HAVE BEEN REPLACED, IT IS LIKELY THAT A NEW KEYWAY WILL HAVE TO BE CUT IN THE LOCKNUT.

9. Clean and ensure inner section of housing and bearings are free from foreign matter.
10. For PDD – PD22. Lightly grease a new o-ring and install it into o-ring groove in case. For PD25 and up, use gasket sealant sparingly on o-ring and mating surfaces.



NOTE: BE CERTAIN THAT THE O-RING STAYS SEATED IN GROOVE DURING STEP DURING ALL ASSEMBLY STAGES.

11. Fit gear set and sun gear to the output housing. Line up bolt holes and fit ring gear. Make sure the ring gear sits flat on the housing. Top up gear oil level to top of gear set.
12. For PD6 – PD10, lightly grease o-ring and fit to interim housing and fit interim housing to gear set lining up scribe mark.
Steps with an asterisk (*) apply only to PD units with 2 separate planetary. (PD25 - PD50) and HF units (PD8HF – PD10HF).
13. *Fit o-ring to interim housing using sealant as previously described, then fit interim housing to ring gear lining up scribe mark.

14. *Fit primary gear set as from step # 11.



NOTE: THE DRIVE UNIT CAN BE FILLED WITH GEAR OIL NOW OR AFTER FULLY ASSEMBLED. IF FULLY ASSEMBLED THE OIL WILL HAVE TO BE Poured THROUGH THE BUNG IN THE OUTPUT HOUSING. OIL QUANTITY IS ON PAGE 2.

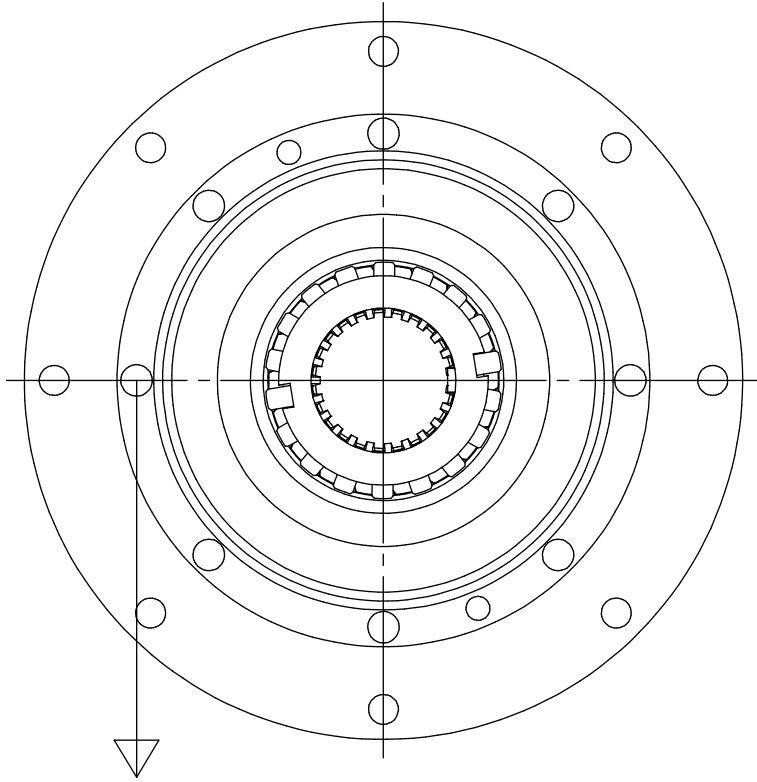
15. *Fit o-ring to input housing and fit input housing to primary gear set using sealant and aligning scribe mark as previously described.
16. *Fit the hydraulic motor using gasket sealant between motor and housing. Refer back to scribe marks made across external joints prior to Disassembly Procedure. Line up scribe marks so that orientation of motor mount holes and oil plug are back to their original positions and refit motor.
17. The drive unit can be filled with gear oil now or after fully assembled. If fully assembled the oil will have to be poured through the bung in the output housing. Oil quantity is on page 2. Grease a new o-ring and install it into the groove of hydraulic motor. Refer back to scribe marks made across external joints prior to Disassembly Procedure. Line up scribe marks so that orientation of motor mount holes and oil plug are back to their original positions and refit motor.



NOTE: BE CERTAIN O-RING STAYS SEATED IN COVER DURING STEP #12 THROUGH #16.

18. On PDD – PDX3 refit hood, install bolts through housing to hood using Loctite 243 on thread and tension as required. On PD3 – PD10 Install all inner bolts and nyloc nuts to output housing through to hydraulic motor using Loctite 243 on thread ends and tension as required.
19. Fit hood to gearbox assembly making sure original scribe marks are aligned. Fit all outer bolts and tension to the following setting.
- PDD- PD7 (55nm) PD8 – PD12 (75nm) PD15 – PD22 (120nm) PD25 – PD50 (170nm)**
20. Attach hydraulic hoses and test operation.
21. THE AUGER DRIVE IS NOW READY FOR USE.

BEARING PRELOAD CHART

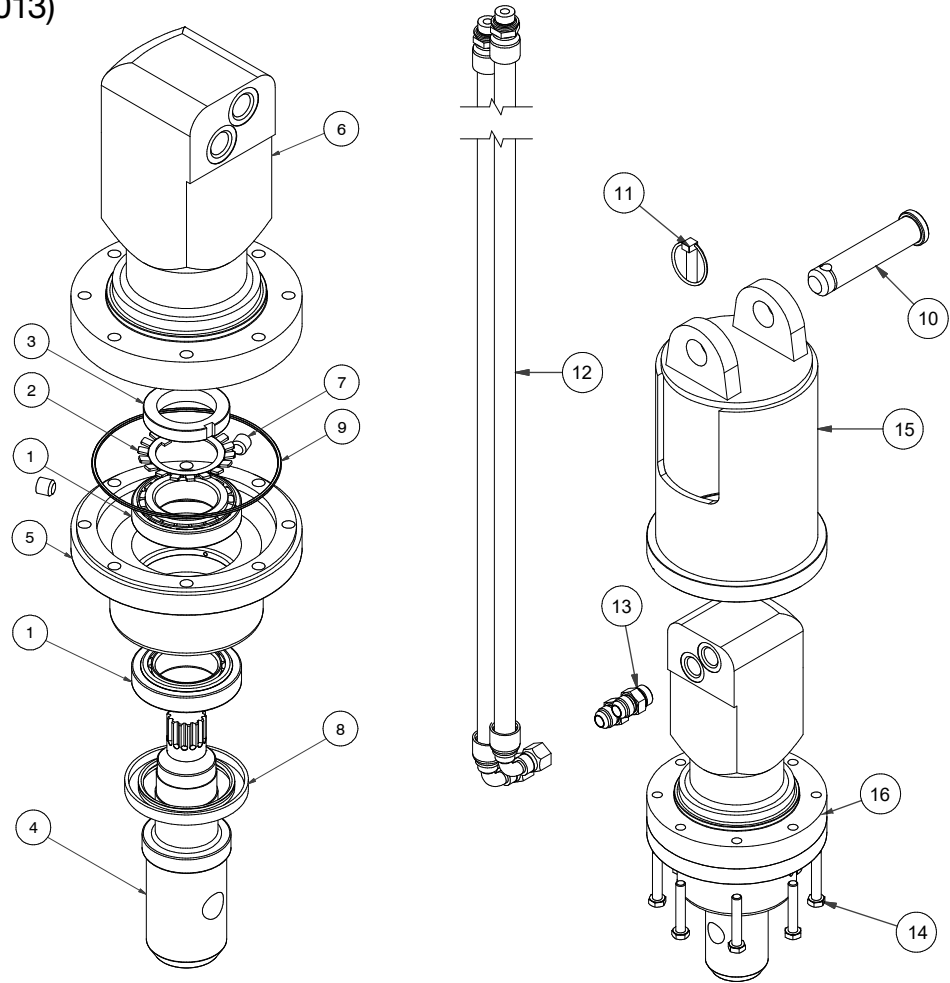


PD UNIT	HOUSING	SHAFT DIA (mm)	FORCE (Kg)
PDD, PDX, PDX2 PDX3, PD3 & PD5	S2	50.8	4
PD6 - PD12	S4	70	7
	S4 (RME)	70/75	10
	S4	75	15
PD15 - PD22	S5	100	30
	S6	100	30
PD25-PD50	S8	120	35
	S9.5	120	35
	S10	150	45
	S12	180	55

FORCE (in Kg)

This is the force to keep the housing spinning slowly at a constant speed. The force required to start the spinning initially will be greater. This is not the correct reading. To ensure an accurate reading the force direction must be held at 90 degrees. (As shown). Reading is to be taken from the inner bolt pattern.

PDD (POST AUGUST 2013)



PDD (POST AUGUST 2013) PARTS LIST

ITEM	QTY	PART NUMBER	DESCRIPTION
1	2	BE-000021	BEARING TAPERED ROLLER
2	1	GB-003175	LOCKING TAB
3	1	GB-002124	LOCKNUT
4	1	GB-003124	SHAFT
4	1	GB-003192	SHAFT
4	1	GB-003194	SHAFT
4	1	GB-003193	SHAFT
5	1	GB-003126	OUTPUT HOUSING
6	1	MO-000029	EATON 2K BELL MOTOR (SUIT PDD - POST AUGUST 2013 ONLY)
7	2	PP-000004	PRESSURE PLUG
8	1	SE-000002	SEAL
9	1	SE-000012	O-RING
10	1	PI-000014	PIN
11	1	PI-000032	LYNCH PIN
12	1	HS-000202	HOSE HYD - 2.2M LESS COUPLING
13	2	HA-000028	NIPPLE
14	8	FA-000009	BOLT HEX
15	1	HO-000213	HOOD BELL MOTOR PDD-PDX3
16	1	GB-003124	SHAFT
16	1	GB-003192	SHAFT
16	1	GB-003194	SHAFT
16	1	GB-003193	SHAFT

PDD (POST AUGUST 2013) DECALS

QTY	PART NUMBER	DESCRIPTION
1	DE-000088	DECAL NEW GENERATION (CAUTION)
1	DE-000089	DECAL NEW GENERATION (WARNING)
1	DE-000092	DECAL NEW GENERATION (DIGGA PD) - 47MM
1	DE-000111	DECAL NEW GENERATION (X) - 20MM
1	DE-000112	DECAL NEW GENERATION (D) - 20MM
1	DE-000113	DECAL NEW GENERATION (2) - 20MM
1	DE-000114	DECAL NEW GENERATION (3) - 20MM
1	DE-000118	DECAL NEW GENERATION (NEW GENERATION) - 208MM WIDTH
1	DE-000751	DECAL WRAP - FOR PDD

PDD (PRE AUGUST 2013) / PDX / PDX2 / PDX3 PARTS LIST

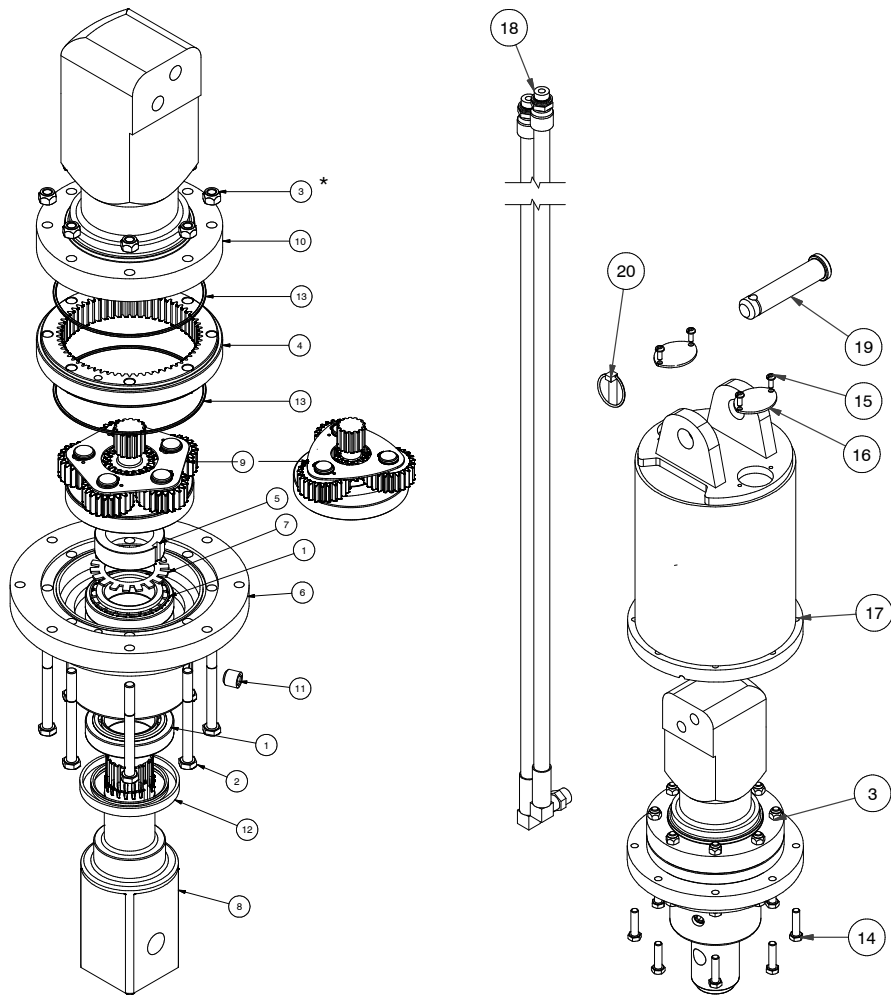
ITEM	QTY	PART NUMBER	DESCRIPTION
1	2	BE-000021	BEARING TAPERED ROLLER
2	1	GB-000011	RING GEAR
3	1	GB-000159	LOCKNUT WITH BUILT IN SPACER
4	1	GB-000162	SHAFT
4	1	GB-000163	SHAFT
4	1	GB-000237	SHAFT
4	1	GB-000241	SHAFT
4	1	GB-000242	SHAFT
5	1	GB-000234	LOCKING TAB - SHAFT
6	1	GB-000290	OUTPUT HOUSING - PDX STANDARD
7	1	GB-001329	GEARSET
7	1	GB-001415	GEARSET (SUIT PDX ONLY)
8	1	MO-000004	EATON 2K BELL MOTOR (SUIT PDD ONLY)
8	1	MO-000012	EATON 2K BELL MOTOR (SUIT PDX ONLY)
8	1	MO-000017	EATON 2K BELL MOTOR (SUIT PDX2 ONLY)
8	1	MO-000018	EATON 2K BELL MOTOR (SUIT PDX3 ONLY)
*	1	MC-000006	MOTOR SEAL KIT
9	1	PP-000001	PRESSURE PLUG
10	1	PP-000004	PRESSURE PLUG
11	1	SE-000002	SEAL
12	2	SE-000012	O-RING
13	8	FA-000002	BOLT HEX
14	2	HA-000028	NIPPLE MALE
15	1	HO-000213	HOOD BELL MOTOR PDD-PDX3
16	1	HS-000202	HOSE HYD
17	1	PI-000014	PIN
18	1	PI-000032	LYNCH PIN
19	1	GB-001523	GEARBOX
19	1	GB-001524	GEARBOX
19	1	GB-001525	GEARBOX
19	1	GB-001526	GEARBOX

* MOTOR SEAL KITS NOT SHOWN ON DIAGRAM

PDD / PDX / PDX2 / PDX3 DECALS

QTY	PART NUMBER	DESCRIPTION
1	DE-000088	DECAL NEW GENERATION (CAUTION)
1	DE-000089	DECAL NEW GENERATION (WARNING)
1	DE-000092	DECAL NEW GENERATION (DIGGA PD) - 47MM
1	DE-000111	DECAL NEW GENERATION (X) - 20MM
1	DE-000112	DECAL NEW GENERATION (D) - 20MM
1	DE-000113	DECAL NEW GENERATION (2) - 20MM
1	DE-000114	DECAL NEW GENERATION (3) - 20MM
1	DE-000118	DECAL NEW GENERATION (NEW GENERATION) - 208MM WIDTH
1	DE-000751	DECAL WRAP - FOR PDD
1	DE-000752	DECAL WRAP - FOR PDX
1	DE-000753	DECAL WRAP - FOR PDX2

PD3 / PD4 / PD5



PD3 / PD4 / PD5 - PARTS LIST

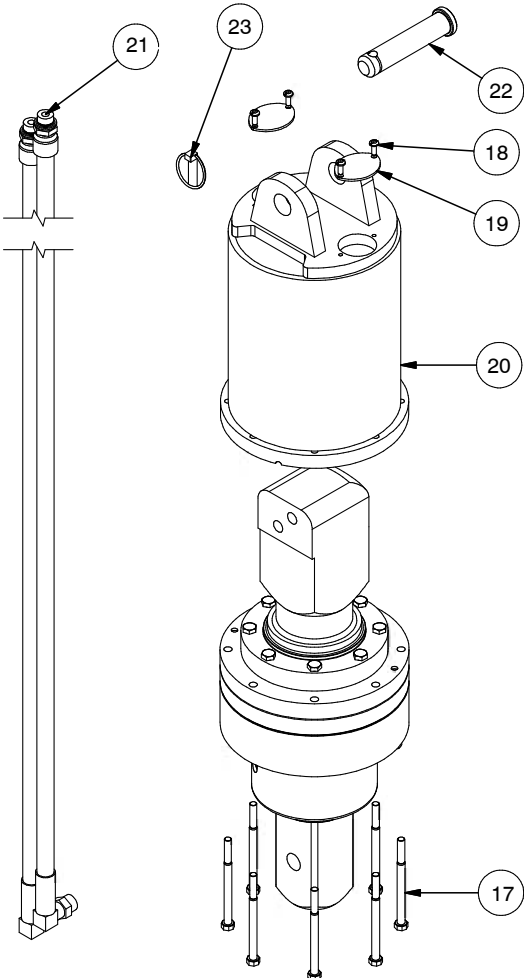
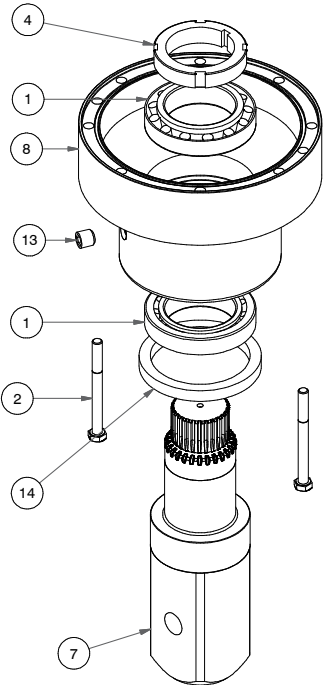
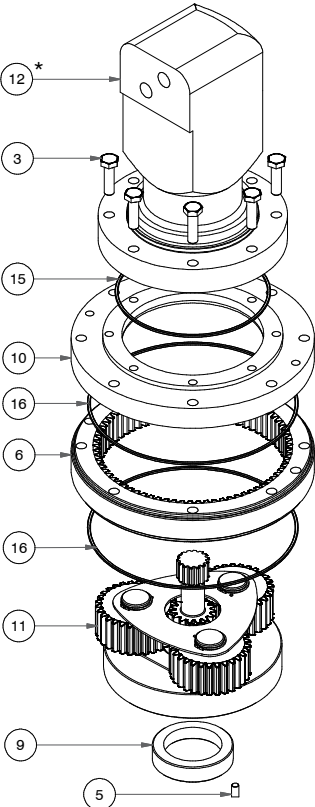
ITEM	QTY	PART NUMBER	DESCRIPTION
1	2	BE-000021	BEARING TAPERED ROLLER
2	8	FA-000002	BOLT HEX
3	8	FA-000097	NUT NYLOC
4	1	GB-000011	RING GEAR
5	1	GB-000159	LOCKNUT WITH BUILT IN SPACER
6	1	GB-000173	OUTPUT HOUSING - PHB STANDARD
7	1	GB-000234	LOCKING TAB - SHAFT
8	1	GB-000162	SHAFT
	1	GB-000163	SHAFT
	1	GB-000237	SHAFT
	1	GB-000241	SHAFT
	1	GB-000242	SHAFT
9	1	GB-001329	GEARSET - SUIT PD3/PD4
	1	GB-001330	GEARSET - SUIT PD5
10	1	MO-000022	MOTOR HYD 2K BELL MOTOR - SUIT PD3
	1	MO-000029	MOTOR HYD 2K BELL - SUIT PD4/PD5
*	1	MC-000006	MOTOR SEAL KIT
11	1	PP-000001	PRESSURE PLUG
12	1	SE-000002	SEAL
13	2	SE-000012	O-RING
14	8	FA-000007	BOLT HEX
15	4	FA-000112	SCREW PAN METAL
16	2	HO-000016	HOOD CAP - TYRE 2 SCS
17	1	HO-000202	HOOD - PD3/PD4
		HO-000396	HOOD - PD5
18	1	HS-000081	HOSE HYDE
19	1	PI-000014	PIN
20	1	PI-000032	LYNCH PIN

* MOTOR SEAL KITS NOT SHOWN ON DIAGRAM

PD3 / PD4 / PD5 - DECALS

QTY	PART NUMBER	DESCRIPTION
1	DE-000088	DECAL NEW GENERATION (CAUTION)
1	DE-000089	DECAL NEW GENERATION (WEARING)
1	DE-000091	DECAL NEW GENERATION (DIGGA PD) - 75MM
1	DE-000103	DECAL NEW GENERATION (5) -35MM
1	DE-000108	DECAL NEW GENERATION (NEW GENERATION) - 255MM WIDTH
1	DE-000339	DECAL WRAP - FOR PD3
1	DE-000340	DECAL WRAP - FOR PD4
1	DE-000743	DECAL WRAP - FOR PD5

PD6 / PD7



PD6 / PD7 PARTS LIST

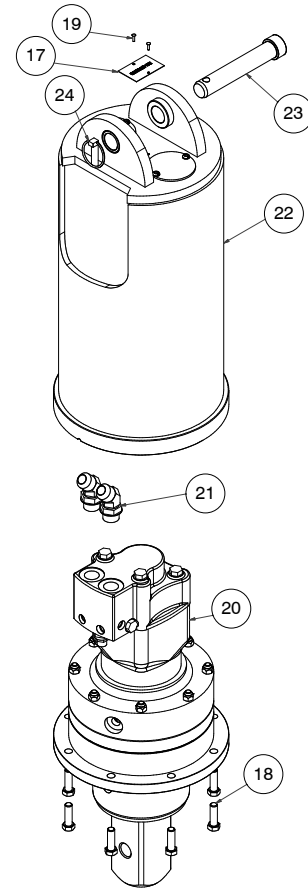
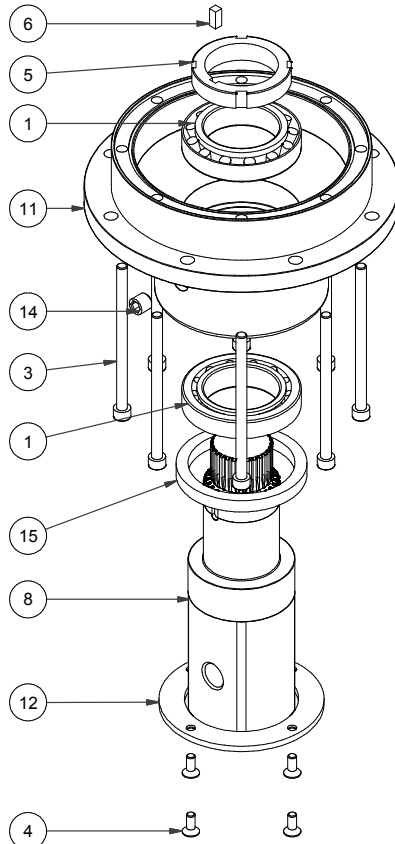
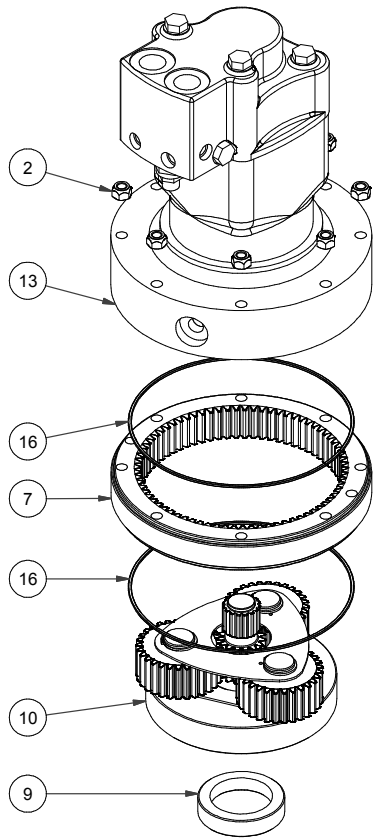
ITEM	QTY	PART NUMBER	DESCRIPTION
1	2	BE-000024	BEARING TAPERED ROLLER
2	2	FA-000002	BOLT HEX
3	8	FA-000208	BOLT HEX
4	1	GB-000004	LOCK NUT
5	1	GB-000005	KEY - LOCK
6	1	GB-000008	RING GEAR - ALL RATIOS
7	1	GB-000487	SHAFT
8	1	GB-000517	OUTPUT HOUSING - PD6/7
9	1	GB-000611	SPACER - (SUIT NO CIRCLIP)
10	1	GB-001305	INPUT HOUSING - 2K BELL MOTOR
11	1	GB-001331	GEARSET - SUITS PD6
	1	GB-001449	GEARSET - SUITS PD7
12	1	MO-000022	MOTOR HYD 2K BELL MOTOR - SUITS PD6
	1	MO-000029	MOTOR HYD 2K BELL MOTOR - SUITS PD7
*	1	MC-000006	MOTOR SEAL KIT
13	1	PP-000001	PRESSURE PLUG
14	1	SE-000006	SEAL
15	1	SE-000012	O-RING
16	2	SE-000013	O-RING
17	8	FA-000004	BOLT HEX
18	4	FA-000112	SCREW PAN METAL
19	2	HO-000016	HOOD CAP - TYPE 2 SCS
20	1	HO-000396	HOOD CAP - PD6/PD7
21	1	HS-000081	HOSE HYDE
22	1	PI-000014	PIN
23	1	PI-000032	LYNCH PIN

* MOTOR SEAL KITS NOT SHOWN ON DIAGRAM

PD6 / PD7 PARTS DECALS

QTY	PART NUMBER	DESCRIPTION
1	DE-000088	DECAL NEW GENERATION (CAUTION)
1	DE-000089	DECAL NEW GENERATION (WARNING)
1	DE-000091	DECAL NEW GENERATION (DIGGA PD) - 75MM
1	DE-000104	DECAL NEW GENERATION (6) - 35MM
1	DE-000105	DECAL NEW GENERATION (7) - 35MM
1	DE-000108	DECAL NEW GENERATION (NEW GENERATION) - 255MM WIDTH
1	DE-000744	DECAL WRAP FOR PD6
1	DE-000745	DECAL WRAP FOR PD7

PD4HF / PD6HF



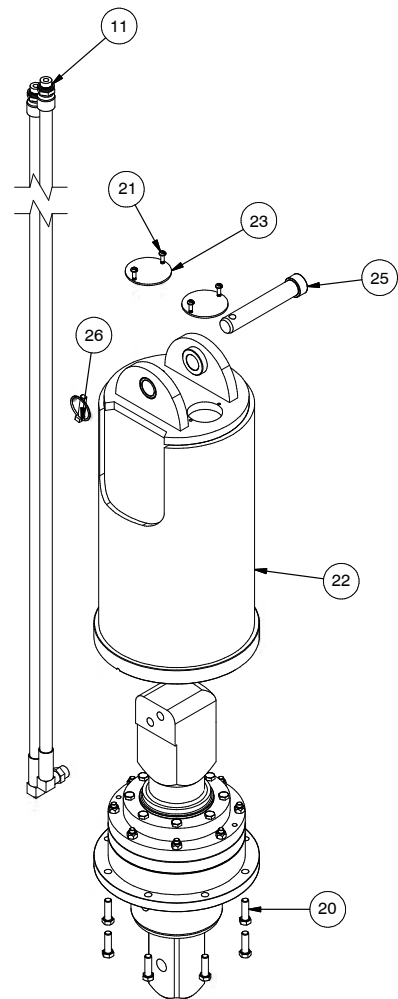
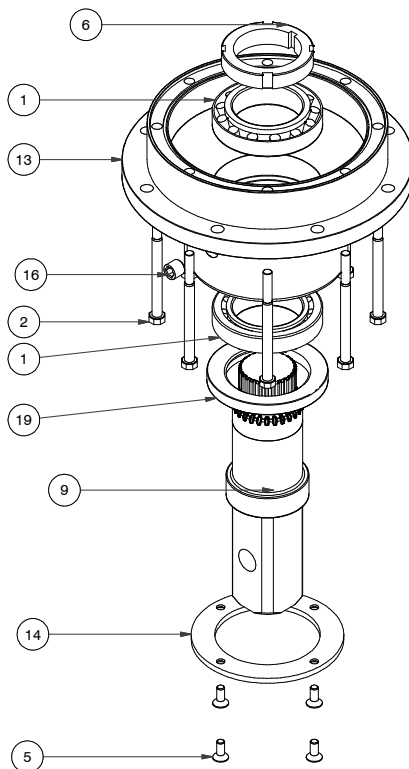
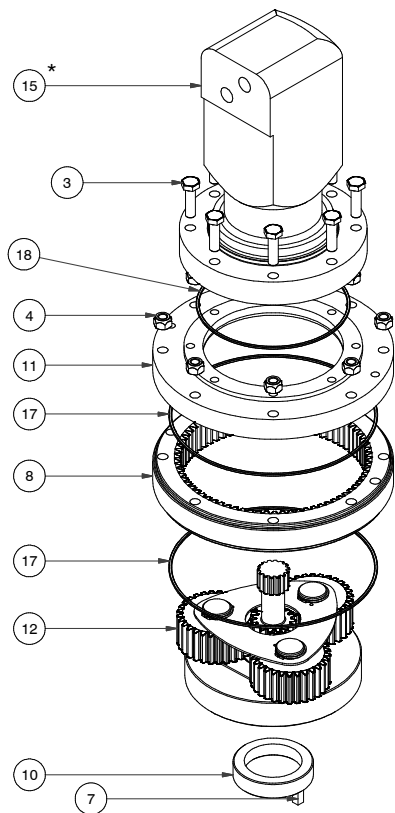
PD4HF / PD6HF PARTS LIST

ITEM	QTY	PART NUMBER	DESCRIPTION
1	2	BE-000024	BEARING TAPERED ROLLER
2	8	FA-000097	NUT NYLOC
3	8	FA-000128	SCREW SOCKET HEAD CAP
4	4	FA-000236	SCREW FLAT HEAD SOCKET
5	1	GB-000004	LOCK NUT - S4
6	1	GB-000005	KEY - LOCK
7	1	GB-000008	RING GEAR - S4 - ALL RATIOS
8	1	GB-000487	SHAFT - S4
9	1	GB-000611	SPACER - S4 (SUIT NO CIRCLIP)
10	1	GB-001498	GEARSET - S4
11	1	GB-001754	OUTPUT HOUSING - S4
12	1	GB-001776	SEAL PROTECTOR - S4
13	1	MO-000552	MOTOR HYD (PD4HF)
	1	MO-000553	MOTOR HYD (PD6HF)
14	1	PP-000001	PRESSURE PLUG
15	1	SE-000006	SEAL
16	2	SE-000013	O-RIN
17	1	DE-000063	SERIAL TAG - GEARBOXES
18	8	FA-000014	BOLT HEX
19	2	FA-000194	RIVET
20	1	GB-002829	GEARBOX ASSEMBLY - PD4 HF
	1	GB-002865	GEARBOX ASSEMBLY - PD6 HF
21	2	HA-000430	ELB45-17JICM-17UNOM-S88-1717
22	1	HO-000060	HOOD - PREMIUM DRIVES 8-10
23	1	PI-000028	HOOD PIN
24	1	PI-000032	LYNCH PIN

PD4HF / PD6HF PARTS DECAL

QTY	PART NUMBER	DESCRIPTION
1	DE-000063	SERIAL TAG - GEARBOXES
1	DE-000088	DECAL NEW GENERATION (CAUTION)
1	DE-000089	DECAL NEW GENERATION (WARNING)
1	DE-000091	DECAL NEW GENERATION (DIGGA PD) - 75MM
1	DE-000102	DECAL NEW GENERATION (4) - 35MM
1	DE-000321	DECAL-HIGH FLOW
1	DE-000345	SWING TAG -GEARBOX OIL REPLACEMENT

PD8/ PD10



PD8/ PD10 PARTS LIST

ITEM	QTY	PART NUMBER	DESCRIPTION
1	2	BE-000024	BEARING TAPERED ROLLER
2	8	FA-000004	BOLT HEX
3	8	FA-000007	BOLT HEX
4	8	FA-000097	NUT NYLOC
5	4	FA-000236	SCREW FLAT HEAD SOCKET
6	1	GB-000004	LOCK NUT
7	1	GB-000005	KEY - LOCK
8	1	GB-000008	RING GEAR - ALL RATIOS
9	1	GB-000484	SHAFT
	1	GB-000487	SHAFT
	1	GB-002569	SHAFT
10	1	GB-000611	SPACER - (SUIT NO CIRCLIP)
11	1	GB-001305	INPUT HOUSING
12	1	GB-001331	GEARSET - SUIT PD8
	1	GB-001333	GEARSET - PD10
13	1	GB-001754	OUTPUT HOUSING - PD8- CAST VERSION
14	1	GB-001776	SEAL PROTECTOR - SUIT CAST OUTPUT
15	1	MO-000029	MOTOR 2K BELL MOTOR
*	1	MC-000006	MOTOR SEAL KIT
16	1	PP-000001	PRESSURE PLUG
17	1	SE-000012	O-RING
18	2	SE-000013	O-RING
19	1	SE-000006	SEAL

* MOTOR SEAL KITS NOT SHOWN ON DIAGRAM

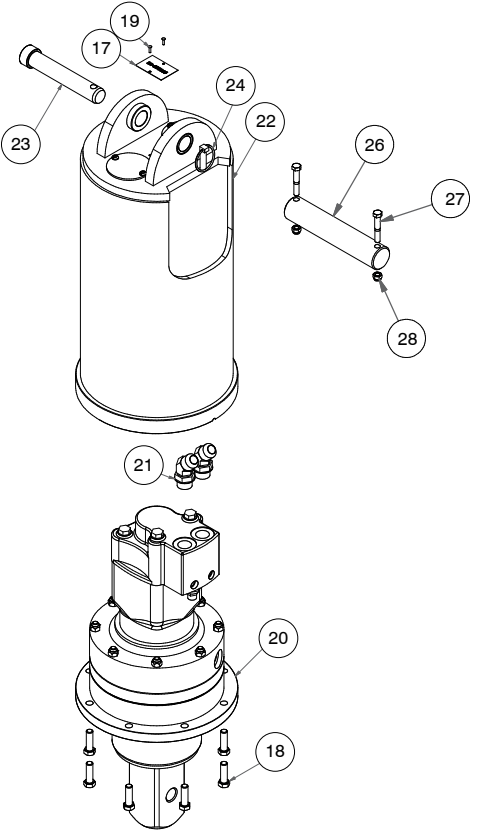
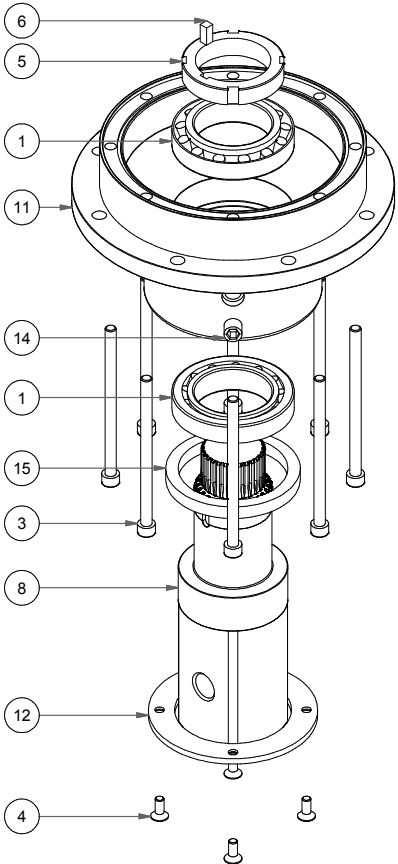
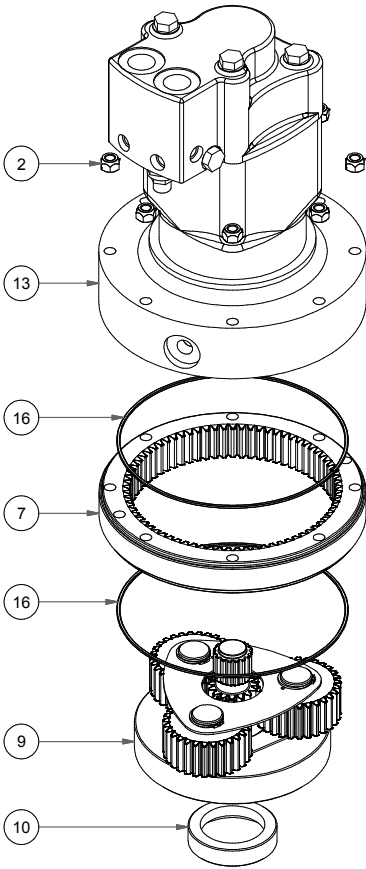
20	8	FA-000014	BOLT HEX
21	4	FA-000112	SCREW PAN METAL THREAD
22	1	HO-000060	HOOD PREMIUM DRIVES - 8-10
23	2	HO-000251	HOOD CAP - TYPE 4 SCS
24	1	HS-000081	HOSE HYDE - AOL 2.2M LESS COUPLINGS (SET OF 2 HOSES)
25	1	PI-000028	HOOD PIN
26	1	PI-000032	LYNCH PIN B7

* MOTOR SEAL KITS NOT SHOWN ON DIAGRAM

PD8/ PD10 PARTS DECALS

QTY	PART NUMBER	DESCRIPTION
1	DE-000088	DECAL NEW GENERATION (CAUTION)
1	DE-000089	DECAL NEW GENERATION (WARNING)
1	DE-000091	DECAL NEW GENERATION (DIGGA PD) - 75MM
1	DE-000099	DECAL NEW GENERATION (1) - 35MM
1	DE-000106	DECAL NEW GENERATION (7) - 35MM
1	DE-000107	DECAL NEW GENERATION (0) - 35MM
1	DE-000108	DECAL NEW GENERATION (NEW GENERATION) - 255MM WIDTH

PD8HF/ PD10HF/ PD12



PD8HF/ PD10HF/ PD12 PART LISTS

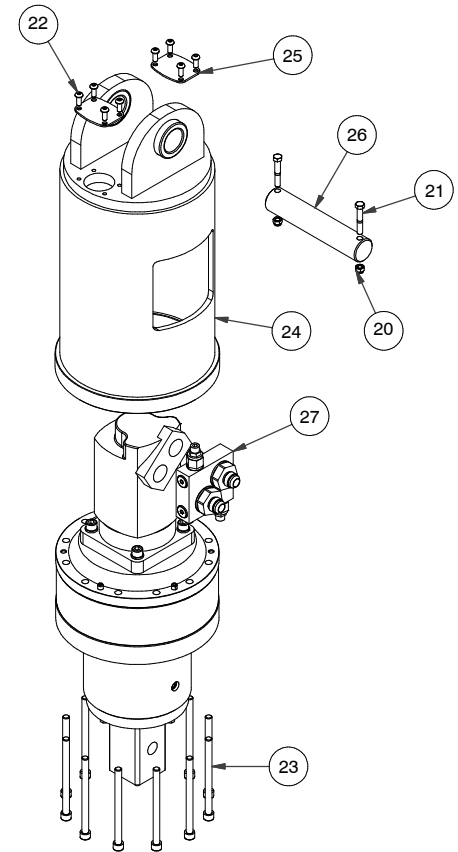
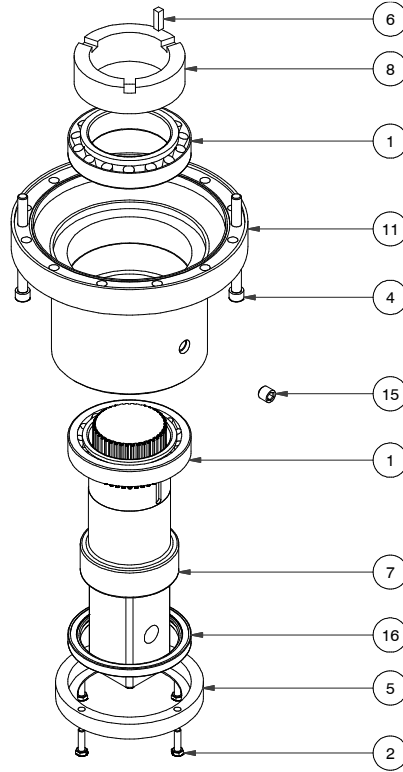
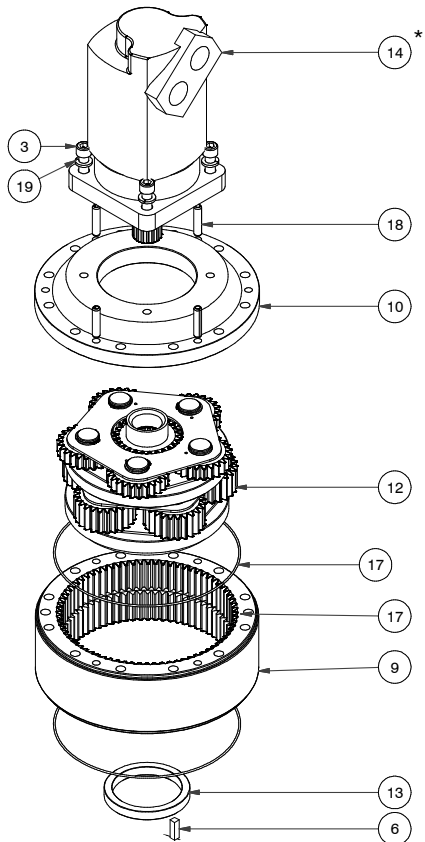
ITEM	QTY	PART NUMBER	DESCRIPTION
1	2	BE-000024	BEARING TAPERED ROLLER E32014J
2	8	FA-000097	NUT NYLOC
3	8	FA-000128	SCREW SOCKET HEAD CAP
4	4	FA-000236	SCREW FLAT HEAD SOCKET
5	1	GB-000004	LOCK NUT
6	1	GB-000005	KEY - LOCK
7	1	GB-000008	RING GEAR - S4 - ALL RATIOS
8	1	GB-000487	SHAFT - S4
9	1	GB-001498	GEARSET - S4 - (PD8HF)
	1	GB-000546	GEARSET - S4 - (PD10HF)
	1	GB-001498	GEARSET - S4 - (PD12)
10	1	GB-000611	SPACER - S4 (SUIT NO CIRCLIP)
11	1	GB-001754	OUTPUT HOUSING - S4
12	1	GB-001776	SEAL PROTECTOR - S4
13	1	MO-000554	MOTOR HYD - (PD8HF)
	1	MO-000556	MOTOR HYD - (PD10HF-PD12)
14	1	PP-000001	PRESSURE PLUG
15	1	SE-000006	SEAL
16	2	SE-000013	O-RING
17	1	DE-000063	SERIAL TAG - GEARBOXES
18	8	FA-000014	BOLT HEX
19	2	FA-000194	RIVET
20	1	GB-002871	GEARBOX ASSEMBLY
21	2	HA-000430	ELB45-17JICM-17UNOM-S88-1717

22	1	HO-000060	HOOD - PREMIUM DRIVES 8-10
		HO-000735	HOOD - PREMIUM DRIVES 12 - STD AND SV (PD12)
23	1	PI-000028	HOOD PIN
24	1	PI-000032	LYNCH PIN
25	1	PM-000002	OPERATORS MANUAL - (PDD-PD50)
26	1	PI-000014	PIN (PD12)
27	2	FA-000046	BOLT HEX (PD12)
28	2	FA-000093	NUT NYLOC (PD12)

PD8HF/ PD10HF/ PD12 PARTS DECALS

QTY	PART NUMBER	DESCRIPTION
1	DE-000088	DECAL NEW GENERATION (CAUTION)
1	DE-000089	DECAL NEW GENERATION (WARNING)
1	DE-000091	DECAL NEW GENERATION (DIGGA PD) - 75MM
1	DE-000099	DECAL NEW GENERATION (1) - 35MM
1	DE-000100	DECAL NEW GENERATION (7) - 35MM
1	DE-000106	DECAL NEW GENERATION (0) - 35MM
1	DE-000107	DECAL NEW GENERATION (NEW GENERATION) - 255MM WIDTH
1	DE-000108	DECAL NEW GENERATION (NEW GENERATION) - 255MM WIDTH
1	DE-000345	SWING TAG -GEARBOX OIL REPLACEMENT

PD15/ PD18/ PD22 (PRE APRIL 2011)



PD15/ PD18/ PD22 PARTS LIST (PRE APRIL 2011)

ITEM	QTY	PART NUMBER	DESCRIPTION
1	2	BE-000025	BEARING TAPERED ROLLER
2	4	FA-000115	SCREW SOCKET HEAD CAP
3	4	FA-000225	BOLT HEX
4	2	FA-000446	SCREW SOCKET HEAD CAP
5	1	GB-000535	SEAL PROTECTOR
6	2	GB-000542	KEY - LOCK
7	1	GB-000567	SHAFT
	1	GB-001491	SHAFT
	1	GB-002145	SHAFT
8	1	GB-001699	LOCKNUT - S6/8 WITH BUILT IN SPACER
9	1	GB-001876	RING GEAR - S5 - DUAL STAGE
10	1	GB-001888	INPUT HOUSING
11	1	GB-002106	OUTPUT HOUSING
12	1	GB-002110	GEARSET - S5 - 6K DIRECT DRIVE INPUT
13	1	GB-002112	SPACER - S5
14	1	MO-000107	MOTOR HYD - SUIT PD15
	1	MO-000108	MOTOR HYD - SUIT PD18
	1	MO-000109	MOTOR HYD - SUIT PD22
*	1	MC-000009	SHAFT SEAL KIT
*	1	MC-000010	REAR SEAL KIT
15	1	PP-000001	PRESSURE PLUG
16	1	SE-000038	SEAL
17	2	SE-000114	SEAL - FOR S5 GEARBOXES
18	4	SP-000006	SPRING PIN
19	4	WA-000010	WASHER SPRING

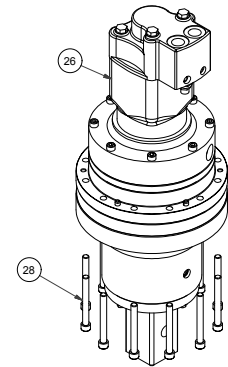
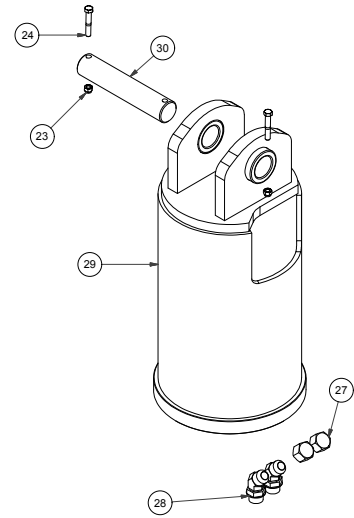
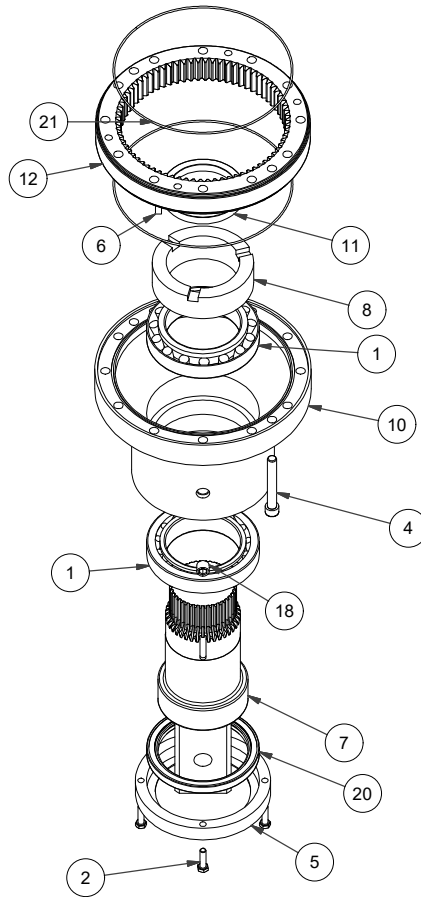
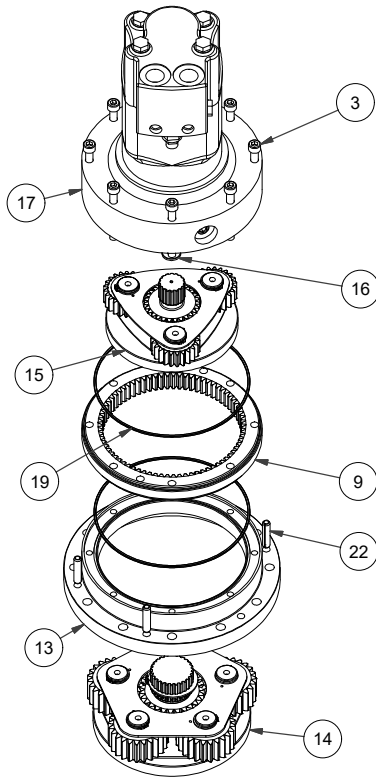
* MOTOR SEAL KITS NOT SHOWN ON DIAGRAM

20	2	FA-000093	NUT NYLOC
21	2	FA-000202	BOLT HEX
22	8	FA-000402	SCREW BUTTON HEAD SOCKET
23	12	FA-000445	SCREW SOCKET HEAD CAP
24	1	HO-000320	HOOD - PREMIUM DRIVES 15, 18, 22
25	2	HO-000437	HOOD CAP - TYPE 6 SCS
26	1	PI-000045	PIN
27	1	VB-000070	VALVE BLOCK - 6K DUAL RELIEF VALVE ASSEMBLY WITH BANJO BOLTS

PD15/ PD18/ PD22 PARTS DECALS

QTY	PART NUMBER	DESCRIPTION
1	DE-000088	DECAL NEW GENERATION (CAUTION)
1	DE-000089	DECAL NEW GENERATION (WARNING)
1	DE-000091	DECAL NEW GENERATION (DIGGA PD) - 75MM
1	DE-000099	DECAL NEW GENERATION (1) - 35MM
1	DE-000100	DECAL NEW GENERATION (2) - 35MM
1	DE-000103	DECAL NEW GENERATION (5) - 35MM
1	DE-000106	DECAL NEW GENERATION (8) - 35MM
1	DE-000108	DECAL NEW GENERATION (NEW GENERATION) - 255MM WIDTH

PD15/ PD18/ PD22 (POST APRIL 2011)



PD15/ PD18/ PD22 PARTS LIST (POST APRIL 2011)

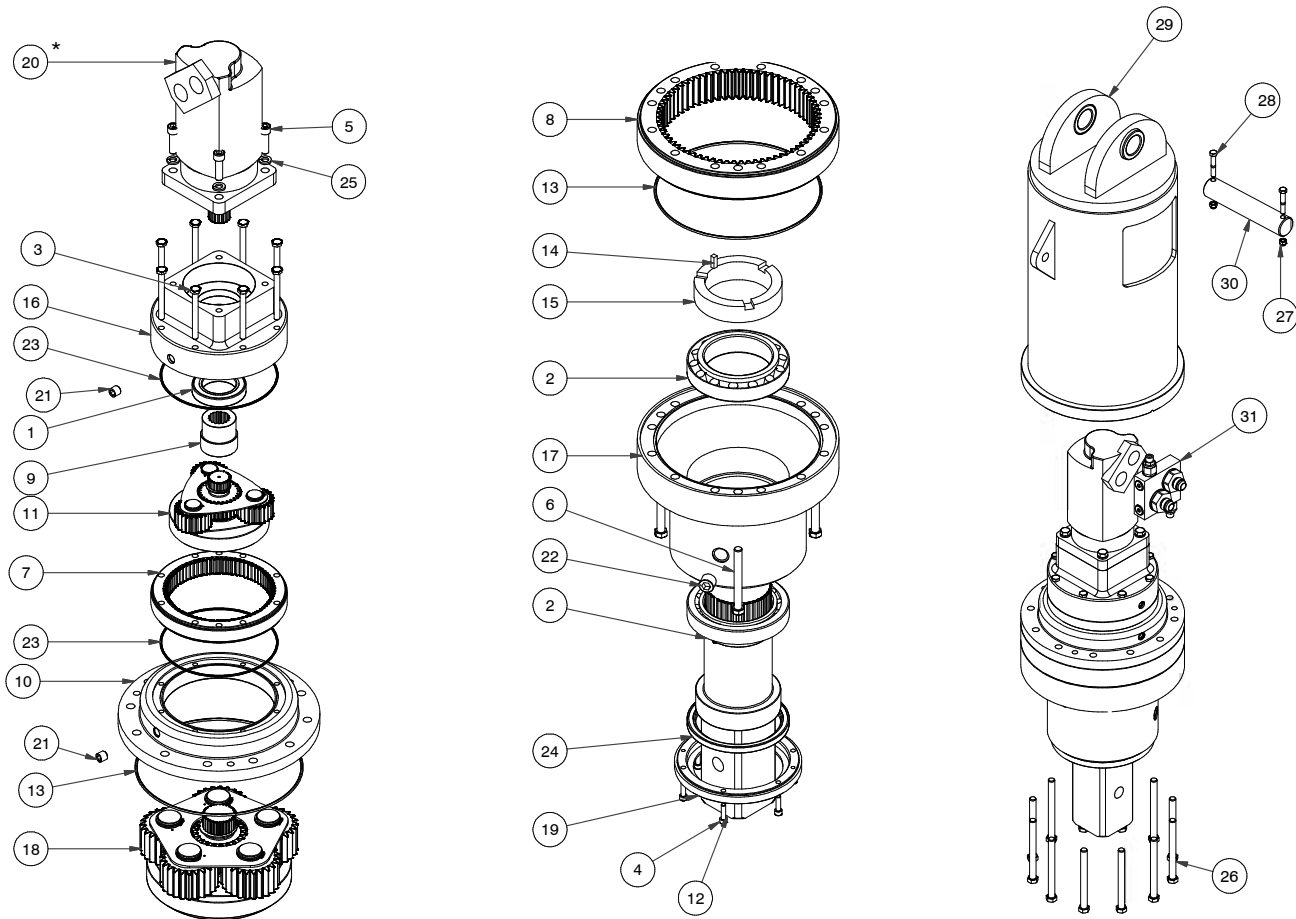
Parts List			
ITEM	QTY	PART NUMBER	DESCRIPTION
1	2	BE-000025	BEARING TAPERED ROLLER E32020J
2	4	FA-000024	BOLT HEX M8 x 30 G8.8 ZINC PLATED
3	8	FA-000132	SCREW SOCKET HEAD CAP M10 X 90 ZINC PLATED
4	2	FA-000610	SCREW SOCKET HEAD CAP M12 x 90 G12.9
5	1	GB-000535	SEAL PROTECTOR - S6/8 - SUIT 120x150x12 SEAL
6	1	GB-000542	KEY STEEL
7	1	GB-001491	SHAFT - S6/8 - 75mm SQ - 40 SPLINE - SHORT OUTPUT
8	1	GB-001699	LOCKNUT - S6/8 - WITH BUILT IN SPACER
9	1	GB-001875	RING GEAR - S3 - ALL RATIOS
10	1	GB-002106	OUTPUT HOUSING - S5 - CAST VERSION - 100 DIA SHAFT
11	1	GB-002112	SPACER - S5 - 13mm
12	1	GB-002786	RING GEAR - S5 - SINGLE STAGE
13	1	GB-002787	INTERIM HOUSING - S3/4 - S5
14	1	GB-002790	GEARSET - S5 - RATIO 3.85 - 40 SPLINE CARRIER - 27T SPLINE SUN GEAR - SINGLE STAGE
15	1	GB-002807	GEARSET - S3.5 - RATIO 3.77 - 27 SPLINE CARRIER - MS1 SUN GEAR
16	1	GB-002819	GEARBOX - S4 - MOTOR SPACER FOR 6K BELL MOTOR
17	1	MO-000555	MOTOR HYD - 23.9CI TYPE 6K BELL TOP PORT (612-6054) - WITH RELIEF VALVE
18	1	PP-000001	PRESSURE PLUG 3/8 BSPT
19	2	SE-000013	O-RING R70170
20	1	SE-000038	SEAL 120 x 150 x 12
21	2	SE-000114	SEAL - R70-176 FOR SERIES 5 GEARBOXES
22	4	SP-000006	SPRING PIN - M10 x 45

ITEM	QTY	PART NUMBER	DESCRIPTION
23	2	FA-000093	NUT NYLOC 3/8 UNC GR5 ZP
24	2	FA-000202	BOLT HEX 3/8 x 2.1/4 G8.8 UNC ZINC PLATED
25	12	FA-000618	SCREW SOCKET HEAD CAP M12 x 110 G12.9
26	1	GB-002828	GEARBOX ASSEMBLY - PDI-16 - S5 12.0 - 75MM SQ SHAFT
27	2	HA-000131	S65-17 - JIC - CAP NUT
28	2	HA-000430	ELB45-17JICM-17UNOM-S88-1717
29	1	HO-000701	HOOD - PDI-13-16 STANDARD HOOD WELDMENT
30	1	PI-000045	PIN - 45 DIA - 100mm LINKAGE PIN

PD15/ PD18/ PD22 PARTS DECALS

QTY	PART NUMBER	DESCRIPTION
1	DE-000088	DECAL NEW GENERATION (CAUTION)
1	DE-000089	DECAL NEW GENERATION (WARNING)
1	DE-000091	DECAL NEW GENERATION (DIGGA PD) - 75MM
1	DE-000099	DECAL NEW GENERATION (1) - 35MM
1	DE-000100	DECAL NEW GENERATION (2) - 35MM
1	DE-000103	DECAL NEW GENERATION (5) - 35MM
1	DE-000106	DECAL NEW GENERATION (8) - 35MM
1	DE-000108	DECAL NEW GENERATION (NEW GENERATION) - 255MM WIDTH

PD25 / PD30 / PD40 / PD50



PD25 / PD30 / PD40 / PD50 PARTS LIST

ITEM	QTY	PART NUMBER	DESCRIPTION
1	1	BE-000023	BEARING
2	2	BE-000029	BEARING TAPERED ROLLER
3	8	FA-000001	BOLT HEX
4	6	FA-000144	SCREW SOCKET HEAD CAP
5	4	FA-000115	SCREW SOCKET HEAD CAP
6	3	FA-000184	BOLT HEX
7	1	GB-000008	RING GEAR - S4 - ALL RATIOS
8	1	GB-000539	RING GEAR - S8
9	1	GB-000555	SPLINE ADAPTOR
10	1	GB-000574	INTERIM HOUSING - S6/8 - S4
11	1	GB-000595	GEARSET - S4
12	1	GB-001418	OUTPUT SHAFT
	1	GB-001429	OUTPUT SHAFT
	1	GB-001429	OUTPUT SHAFT -
	1	GB-001429	OUTPUT SHAFT
13	2	GB-001469	O-RING
14	2	GB-001678	KEY - LOCK
15	1	GB-001697	LOCKNUT - S9.5 - WITH BUILT IN SPACER
16	1	GB-001751	INPUT HOUSING - S4 6K - CAST VERSION
17	1	GB-001753	OUTPUT HOUSING - S8 - 120 SHAFT - CAST VERSION
18	1	GB-001936	GEARSET - S8 - SUIT PD25/PD49
		GB-001937	GEARSET - S8 - SUIT PD30/PD50
19	1	GB-001941	SEAL PROTECTOR - S8 WITH S9.5 SHAFT
20	1	MO-000070	CHARLYN 6K - SUIT PD40/PD50 - Pre October 2012
		MO-000110	CHARLYN 6K - SUIT PD25/PD30 - Pre October 2012
		MO-000555	CHARLYN BELL 6K - SUIT PD40/PD50 - Post October 2012
		MO-000554	CHARLYN BELL 6K - SUIT PD25/PD30 - Post October 2012
*	1	MC-000009	SHAFT SEAL KIT

*	1	MC-000010	REAR SEAL KIT
21	2	PP-000001	PRESSURE PLUG
22	1	PP-000003	PRESSURE PLUG
23	2	SE-000013	O-RING
24	1	SE-000039	SEAL
25	4	WA-000010	WASHER SPRING
26	12	FA-000081	BOLT HEX
27	2	FA-000093	NUT NYLOC
28	2	FA-000202	BOLT HEX
29	1	HO-00053	HOOD - PREMIUM DRIVE 25-50-STD
30	1	PI-000045	PIN
31	1	VB-000070	VALVE BLOCK - 6K DUAL RELIEF VALVE ASSEMBLY WITH BANJO BOLTS

* MOTOR SEAL KITS NOT SHOWN ON DIAGRAM

PD25 / PD30 / PD40 / PD50 DECALS

QTY	PART NUMBER	DESCRIPTION
1	DE-000088	DECAL NEW GENERATION (CAUTION)
1	DE-000089	DECAL NEW GENERATION (WARNING)
1	DE-000092	DECAL NEW GENERATION (DIGGA PD) - 105MM
1	DE-000111	DECAL NEW GENERATION (2) - 60MM
1	DE-000112	DECAL NEW GENERATION (3) - 60MM
1	DE-000113	DECAL NEW GENERATION (4) - 60MM
1	DE-000114	DECAL NEW GENERATION (5) - 60MM
1	DE-000117	DECAL NEW GENERATION (0) - 60MM
1	DE-000118	DECAL NEW GENERATION (NEW GENERATION) - 380MM WIDTH

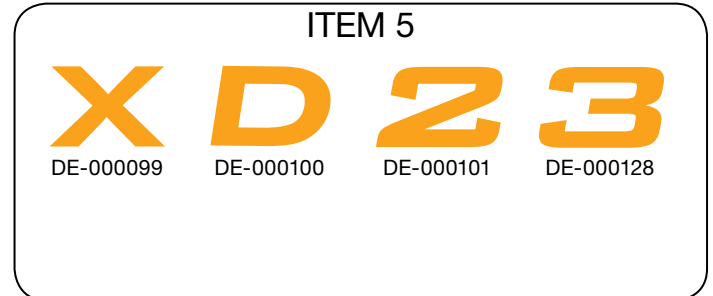
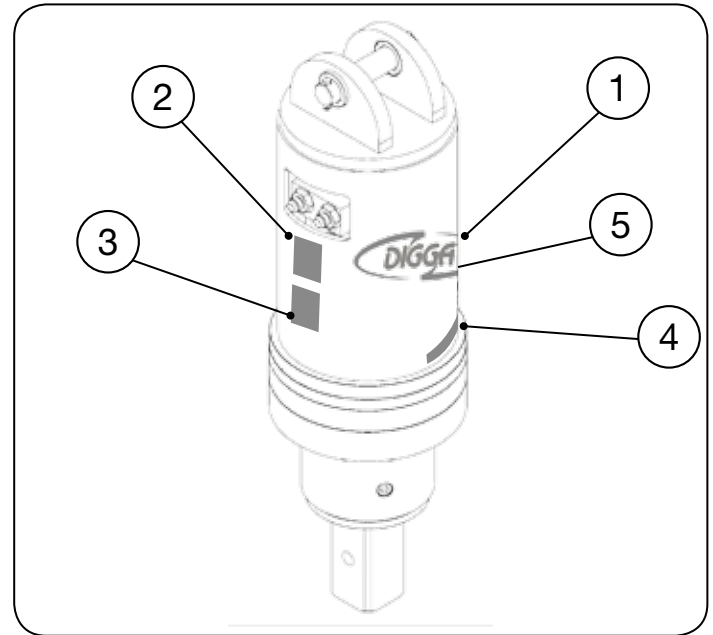
DECAL LOCATION - PDD to PDX3

PLACEMENT OR REPLACEMENT OF SAFETY SIGNS

1. Clean the area of application with non-flammable solvent, then wash the same area with soap and water.
2. Allow the surface to fully dry.
3. Remove the backing from the safety sign, exposing the adhesive surface.
4. Apply the safety sign to the position shown in the diagram above and smooth out any bubbles.

INSTRUCTIONS

- Keep all safety signs clean and legible.
- Replace all missing, illegible, or damaged safety signs.
- Replacement parts for parts with safety signs attached must also have safety signs attached.
- Safety signs are available from your dealer or from Digga Australia.



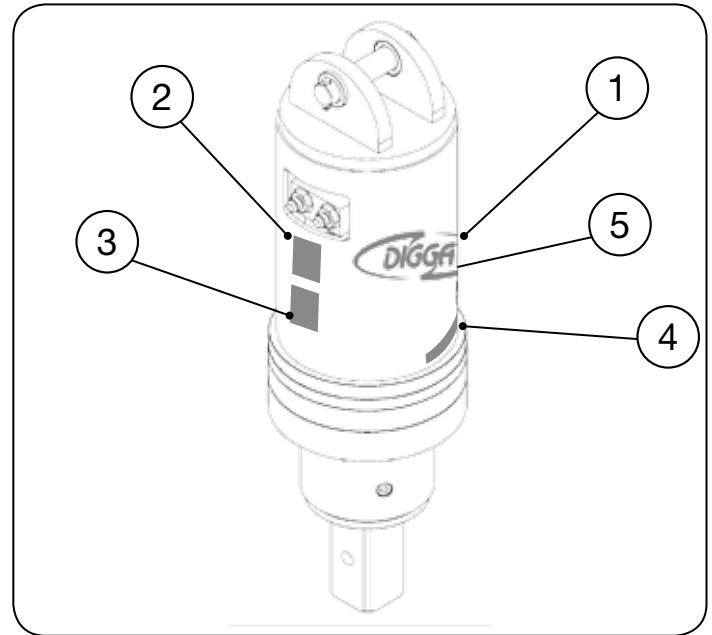
DECAL LOCATION - PD3 to PD14

PLACEMENT OR REPLACEMENT OF SAFETY SIGNS

1. Clean the area of application with non-flammable solvent, then wash the same area with soap and water.
2. Allow the surface to fully dry.
3. Remove the backing from the safety sign, exposing the adhesive surface.
4. Apply the safety sign to the position shown in the diagram above and smooth out any bubbles.

INSTRUCTIONS

- Keep all safety signs clean and legible.
- Replace all missing, illegible, or damaged safety signs.
- Replacement parts for parts with safety signs attached must also have safety signs attached.
- Safety signs are available from your dealer or from Digga Australia.



DE-000091



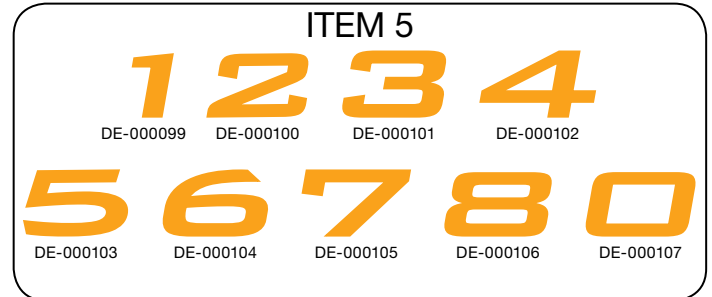
DE-000089



DE-000088



DE-000108



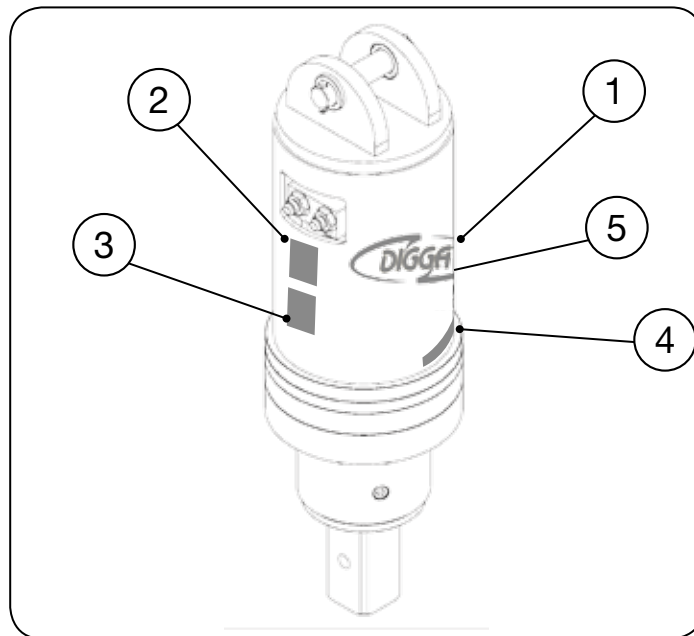
DECAL LOCATION - PD16 to PD50

PLACEMENT OR REPLACEMENT OF SAFETY SIGNS

1. Clean the area of application with non-flammable solvent, then wash the same area with soap and water.
2. Allow the surface to fully dry.
3. Remove the backing from the safety sign, exposing the adhesive surface.
4. Apply the safety sign to the position shown in the diagram above and smooth out any bubbles.

INSTRUCTIONS

- Keep all safety signs clean and legible.
- Replace all missing, illegible, or damaged safety signs.
- Replacement parts for parts with safety signs attached must also have safety signs attached.
- Safety signs are available from your dealer or from Digga Australia.



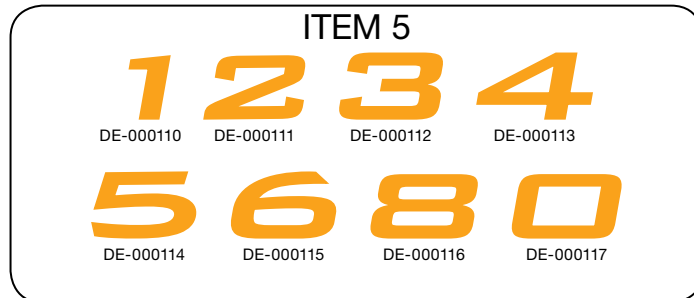
DE-000092



DE-000089



DE-000088



SWING CONTROL SYSTEM

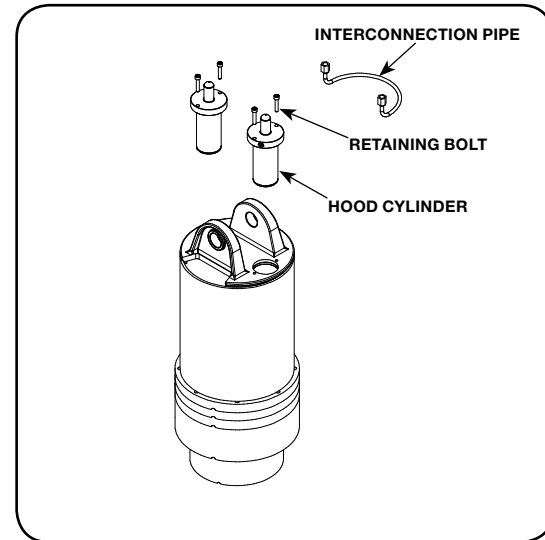
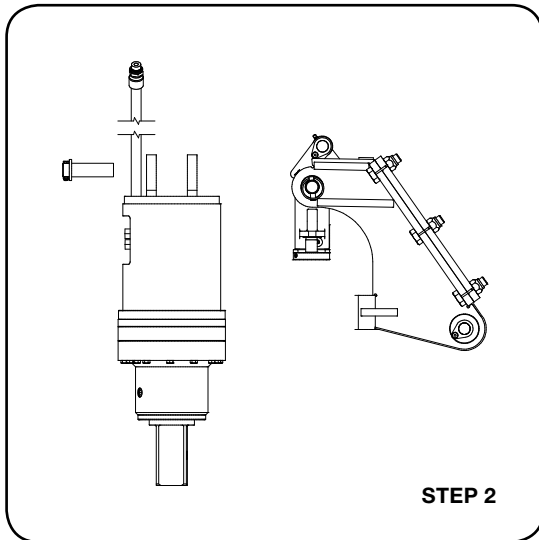
DESCRIPTION: The SCS consists of 3 cylinders. 1 X Aft dampener or main cylinder and 2 X interconnecting Hood cylinders. These cylinders are grease filled and are not pressurised. They can be topped up with grease whenever required.

GREASE TYPE: VALVOLINE C-00-EP (Semi Fluid Grease) or equivalent.

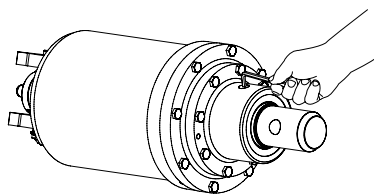
Hood cylinders are recharged in place follow #5 in "Installation of Hood Cylinders" however the Aft Dampener must be removed from the frame. The Hood Cylinders are field serviceable. The Aft Dampener is partially field serviceable.

REMOVAL OF HOOD CYLINDERS:

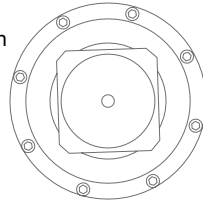
- 1) Using a suitable lifting device lift the entire attachment and place the drive unit in a stable and secure stand.
- 2) Remove the cradle or frame assembly from the drive unit by removing the hood to linkage assembly pin.
- 3) Remove 4 X cylinder retaining bolts and lift up both cylinders. Undo interconnecting pipe from cylinders and remove components from hood.



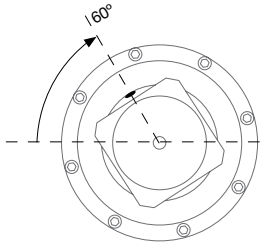
CHANGING THE OIL



1. Lay the drive unit flat on the ground with the oil fill bung facing up. Using an 8mm Allen key remove the bung



2. Rotate the unit until the oil fill hole is sitting at the bottom and drain all the oil.



3. Rotate the unit until the oil fill hole is sitting between 60° - 70° from horizontal. Add oil until it reaches the fill hole. Never completely fill the gearbox with oil. Ensure the drive is tilted 60° when filling.

NOTE: If your unit is leaking oil after you have performed the daily checks consult your local authorised service agent

NOTE



PREMIUM DRIVE UNIT RANGE (PDD-PD50 DRIVE UNITS)

Use quality extreme pressure gear oil
(EPG ISO 320 GRADE - MINERAL OIL)

CHANGING THE SHAFT SEAL



1. Remove hood bolts & remove hood



2. Remove motor bolts & remove motor



3. Remove gear set & ring gear



4. Push locking tabs down using a screwdriver



5. Remove lock nut using a chisel and hammer



6. Remove tab washer



7. Push shaft out in the direction indicated by the arrow



7. Tap out bearing and shaft seal using a screwdriver and hammer

CHANGING THE SHAFT SEAL



9. Now that the shaft seal has been removed, return the bearing to inside the housing



10. Run some Loctite 263 (Red) around the outside of the shaft seal



11. Place the shaft seal in it's position ensuring it is level



12. Place a flat metal sheet on top of the seal and tap with a hammer so that the seal sets evenly



13. Ensure the seal is flush with the housing



14. Apply grease to the inside of the shaft seal



15. Place housing on the shaft and using a metal plate and hammer tap until the shaft is fully inserted



16. Place the tab washer over the shaft lining up the internal tabs

CHANGING THE SHAFT SEAL



17. Screw the nut in place (flat side up) using a chisel and hammer ensuring the recess in the nut lines up with locking tabs previously used



18. Lock the nut by bending the previously used tabs into the nut's recess



19. Replace the gear set



20. Replace the ring gear. Use a screw to help guide it into place.



21. Add oil allowing time for it to settle to the bottom



22. Fill Out to 5mm below locking place



23. Replace motor and motor bolts lining up the hoses with the oil bung



24. Replace hood and hood bolts

INSTALLATION OF HOOD CYLINDERS

1. Place interconnecting tube in hood, screw hood cylinders on to tube, finger tight only, place both cylinders into hood and align bolt holes.
2. Gently lift both cylinders back out of hood and tighten tube nuts ensuring cylinders stay in same position on tube for bolt hole alignment.
3. Place cylinders back in hood, fit and tighten retaining bolts.
4. Reconnect cradle or frame to drive unit.
5. Remove the grub screw from each cylinder and fit a grease nipple to one cylinder. Using a grease gun filled with C-OO-EP grease, pump grease into cylinder and keep filling until both cylinder shafts have contacted the nylon pads on the linkage assembly and grease comes out of the opposite cylinder.
6. Remove grease gun and grease nipple, reinstall grub screws using sealer or thread tape.

ATTACHMENT IS READY TO USE.

REMOVAL OF AFT DAMPENER

1. Using a suitable lifting device lift the entire attachment and place the drive unit in a stable and secure stand.
2. Remove the cradle or frame assembly from the drive unit by removing the hood to linkage assembly pin.
3. Remove connecting pin from top of dampener / linkage assembly and remove linkage assembly to frame pin, taking care that the linkage assembly does not fall. Place linkage assembly aside.
4. Remove both lower dampener retaining pins from frame taking care that the dampener does not fall. Remove dampener from frame.

RECHARGING AFT DAMPENER

1. Push cylinder rod all the way in (closed).
2. Remove both upper and lower plugs (grub screws) from the gland nuts on the cylinder, and fit grease nipple to lower gland nut.
3. Using grease gun filled with C-OO-EP grease pump up the cylinder until the rod is all the way out and grease is coming out of the top plug hole.
4. Remove grease gun and grease nipple. Reinstall both plugs using sealant or thread tape.

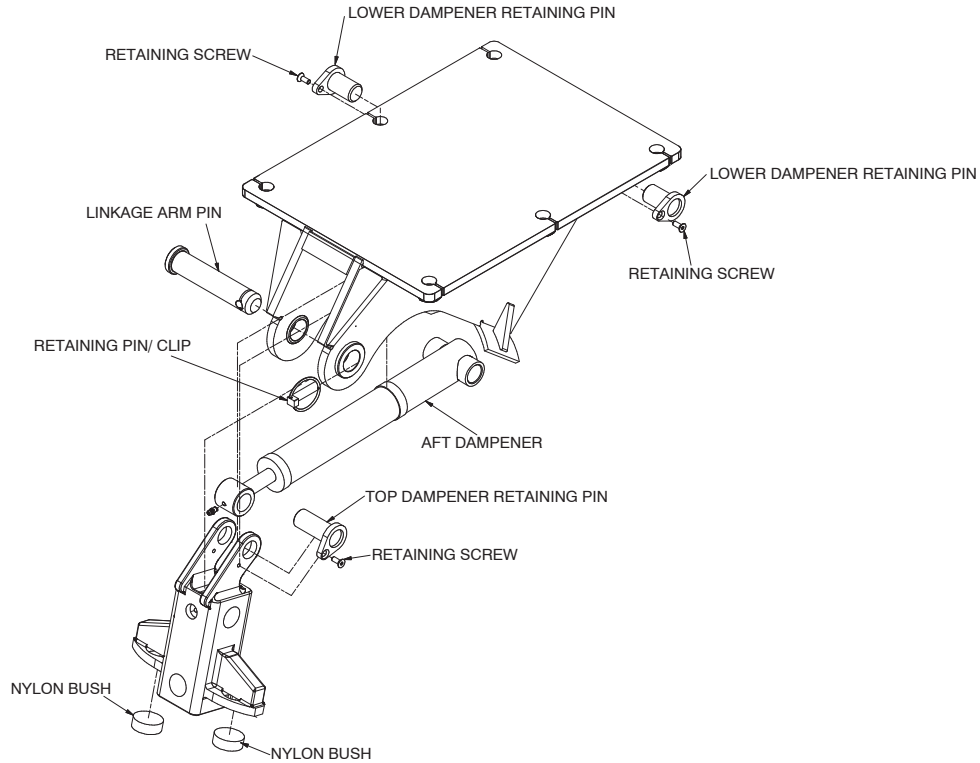


NOTE: DO NOT OVERTIGHTEN THESE PLUGS – GLAND NUTS CAN BE DAMAGED.

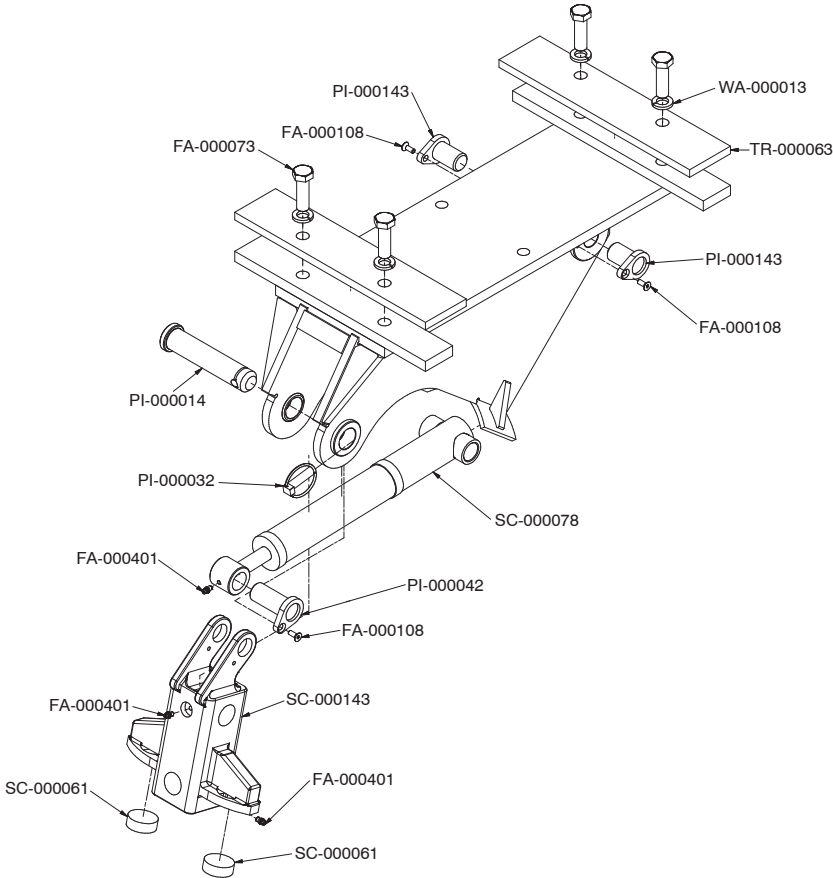
INSTALLATION OF AFT DAMPENER:

1. Smear grease on all Aft Dampener retaining pins prior to installing.
2. A new Aft Dampener does not need charging with grease, it comes from the factory ready to use.
3. If reusing an Aft Dampener that requires recharging it must be done before installing back in frame. Remove grease gun and grease nipple.

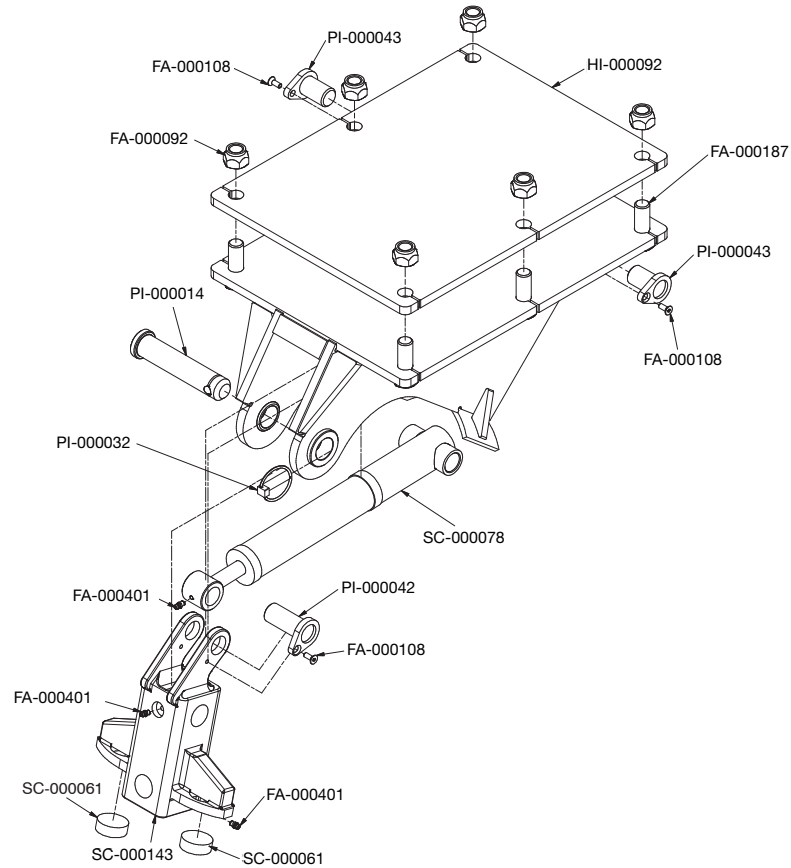
Installation is the reversal of removal procedure.



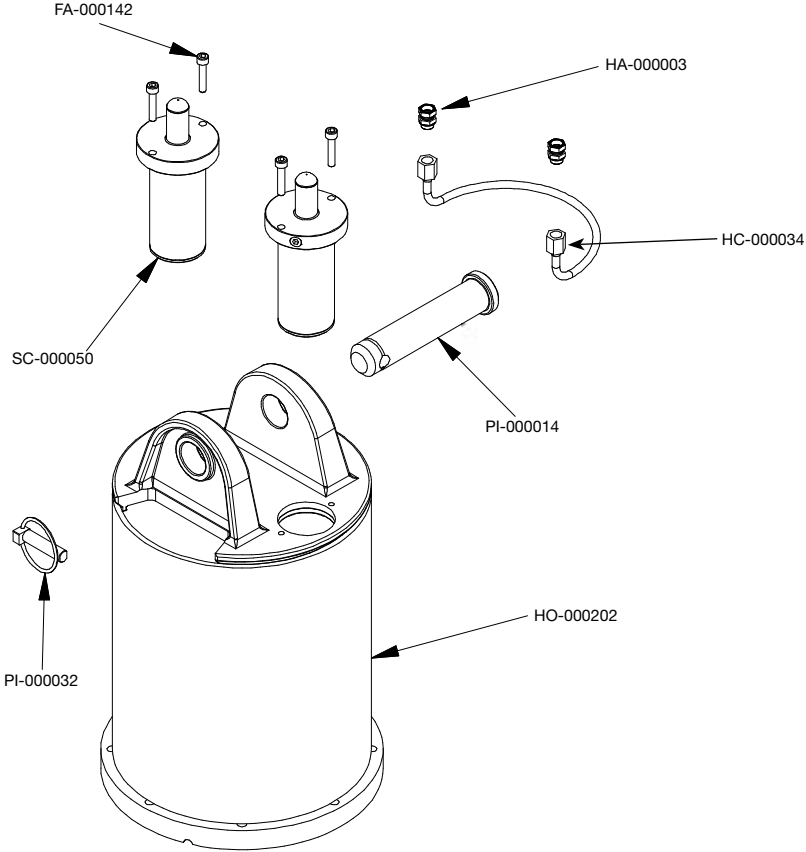
PD3 – PD4 SCS TYPE 2 - SUIT SLIDE CRADLE



PD3 – PD4 SCS TYPE 2 X - SUIT HITCH



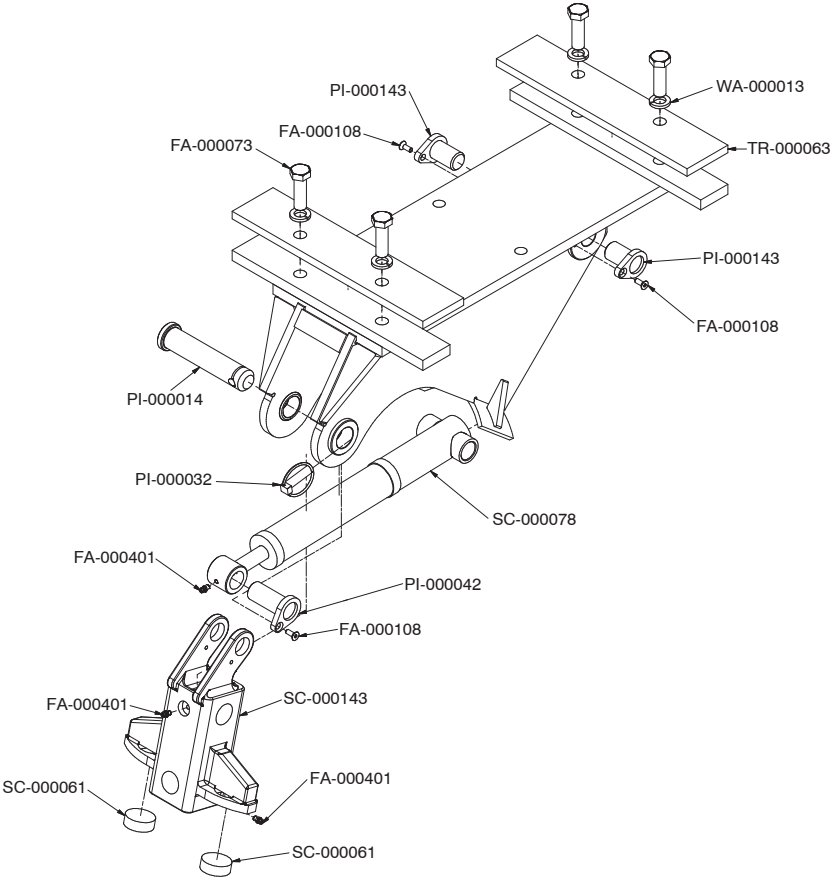
PD3 – PD4 SCS



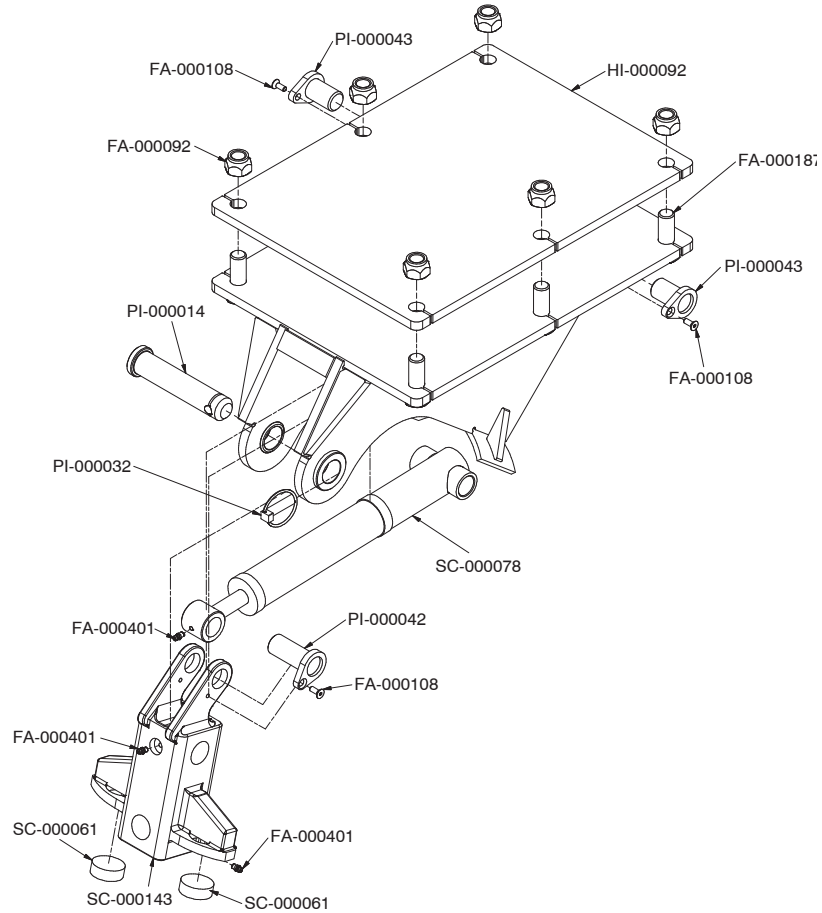
PD3 – PD4 SCS PARTS LIST

QTY	PART NUMBER	DESCRIPTION
4	FA-000073	BOLT HEX
6	FA-000092	NUT NYLOC
3	FA-000108	SCREW FLAT HD SOCKET
4	FA-000142	SCREW SOCKET HD CAP
6	FA-000187	BOLT HEX
2	FA-000401	GREASE NIPPLE
1	HC-000034	TUBE HYD 1/4 HOOD CYL SUIT SCS TYPE 2 & 4
2	HA-000003	NIPPLE
1	HI-000092	HITCH PLATE
1	HO-000202	HOOD - PD1/ PD2/ PD3/ PD4/ PD5/ PD6
1	PI-000014	PIN
2	PI-000032	PIN - LYNCH PIN
1	PI-000042	PIN - TEAR DROP PIN
2	PI-000043	PIN - TEAR DROP PIN
2	SC-000050	HOOD CYLINDER ASSEMBLY
2	SC-000061	SCS TYPE 2 / TYPE 4 NYLON BUSH
1	SC-000078	AFT DAMPENER
1	SC-000143	LINKAGE ASSEMBLY
2	TR - 000063	SIDE SHIFT RETAINING PLATE
4	WA - 000063	WASHER - SPRING

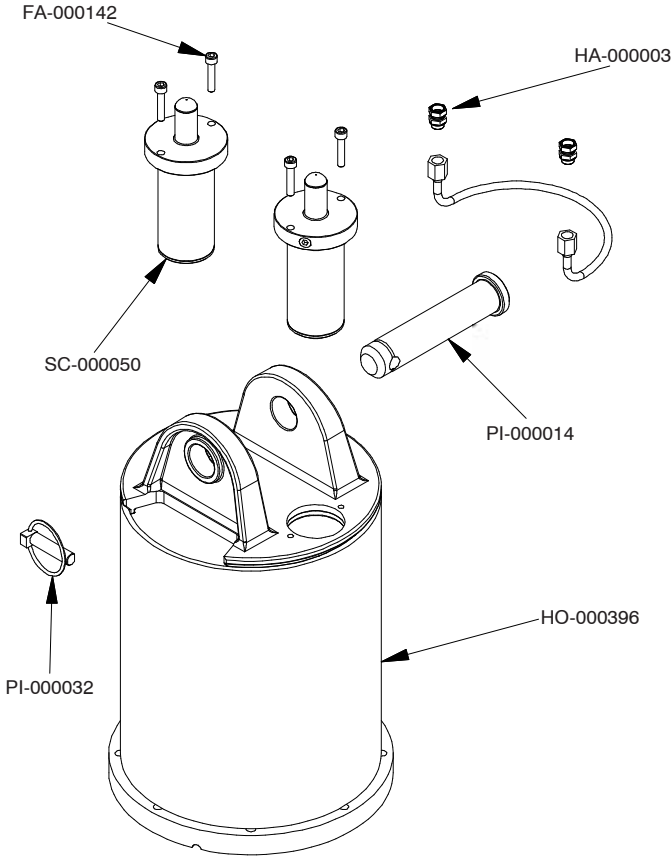
PD5 – PD7 SCS - TYPE 2 - SUIT SLIDE CRADLE



PD5 – PD7 SCS - TYPE 2X - SUIT HITCH



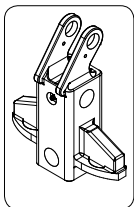
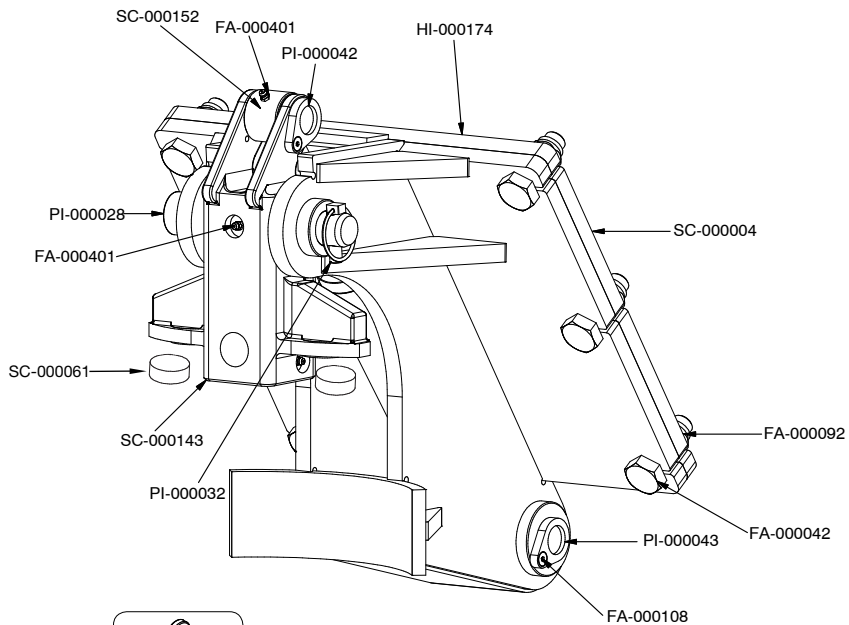
PD5 – PD7 SCS



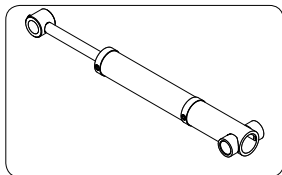
PD5 – PD7 SCS PARTS LISTS

QTY	PART NUMBER	DESCRIPTION
4	FA-000073	BOLT HEX
6	FA-000092	NUT NYLOC
3	FA-000108	SCREW FLAT HD SOCKET
4	FA-000142	SCREW SOCKET HD
6	FA-000187	BOLT HEX
2	FA-000401	GREASE NIPPLE
1	HC-000034	TUBE HYD 1/4 HOOD CYL
2	HA-000003	NIPPLE
1	HI-000092	HITCH PLATE
1	HO-000396	HOOD - PREMIUM DRIVE
1	PI-000014	PIN
2	PI-000032	PIN - LYNCH PIN
1	PI-000042	PIN - TEAR DROP PIN
2	PI-000043	PIN - TEAR DROP PIN
2	SC-000050	HOOD CYLINDER ASSEMBLY
2	SC-000061	SCS TYPE 2 / TYPE 4 NYLON BUSH
1	SC-000143	LINKAGE ASSEMBLY
1	SC-000152	AFT DAMPENER
2	TR - 000063	SIDE SHIFT RETAINING PLATE
4	WA - 000063	WASHER - SPRING

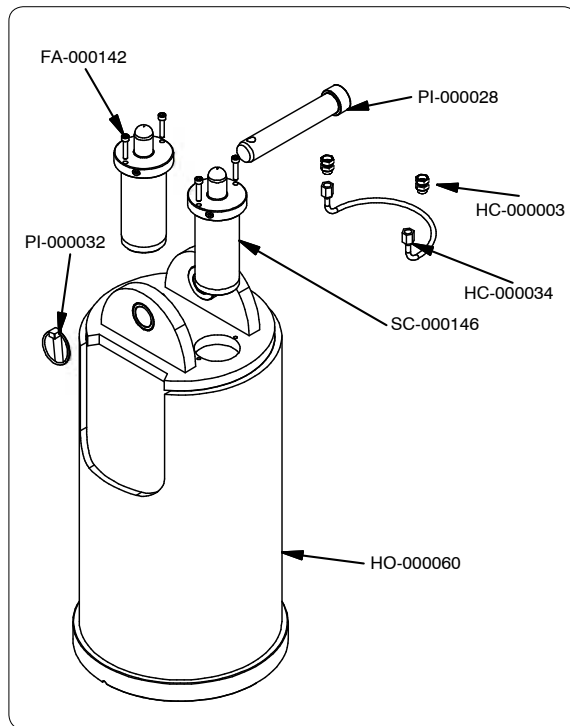
PD8 – PD10 SCS



SC-000143



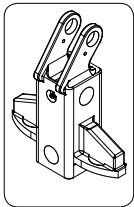
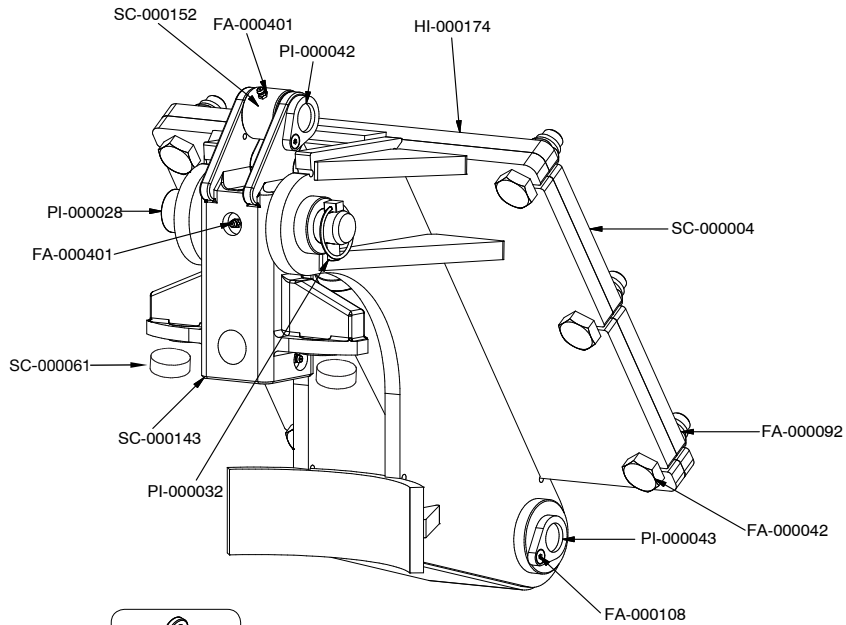
SC-000152



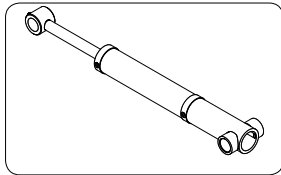
PD8 – PD10 SCS PARTS LIST

QTY	PART NUMBER	DESCRIPTION
6	FA-000043	BOLT HEX
6	FA-000092	NUT NYLOC
3	FA-000108	SCREW FLAT HD SOCKET
4	FA-000142	SCREW SOCKET HD CAP
2	FA-000401	GREASE NIPPLE
1	HC-000034	TUBE HYD 1/4 HOOD CYL
2	HA-000003	NIPPLE
1	HI-000174	HITCH PLATE - WIDE VERSION
1	HO-000060	HOOD - PREMIUM DRIVES 8-10
2	PI-000028	PIN - HOOD PIN
2	PI-000032	PIN - LYNCH PIN
1	PI-000042	PIN - TEAR DROP PIN
2	PI-000043	PIN - TEAR DROP PIN
1	SC-000004	FRAME ASSEMBLY SCS4
2	SC-000061	SCS TYPE 2 / TYPE 4 NYLON BUSH
1	SC-000143	LINKAGE ASSEMBLY - CAST
1	SC-000152	AFT DAMPENER - SCS4X
1	SC-000162	SWING CONTROL

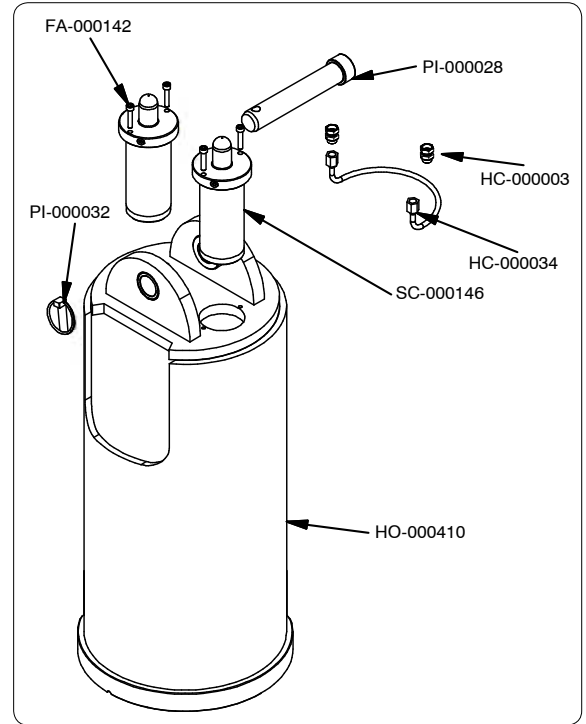
PD8HF – PD10HF



SC-000143



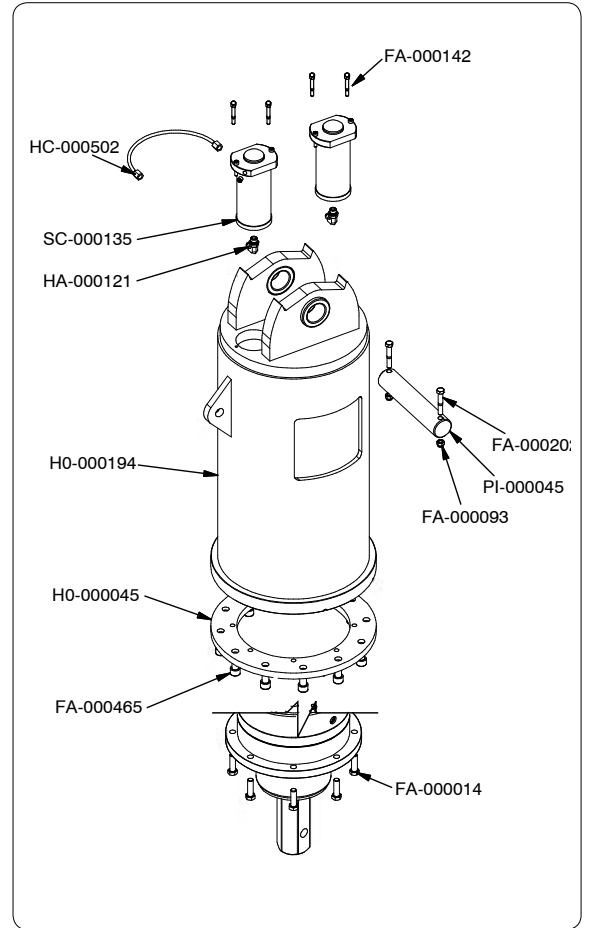
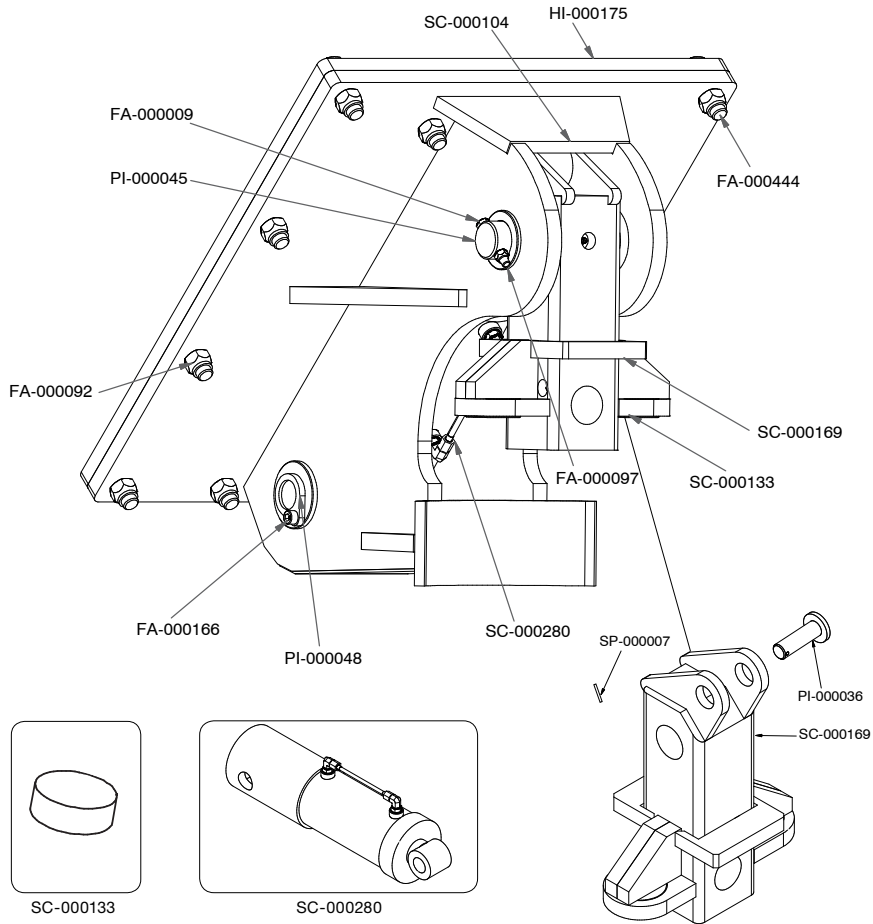
SC-000152



PD8HF – PD10HF - PARTS LIST

QTY	PART NUMBER	DESCRIPTION
6	FA-000042	BOLT HEX
6	FA-000092	NUT NYLOC
3	FA-000108	SCREW FLAT HD SOCKET
4	FA-000142	SCREW SOCKET HD CAP
2	FA-000401	GREASE NIPPLE
1	HC-000034	TUBE HYD 1/4 HOOD CYL
2	HA-000003	NIPPLE
1	HI-000174	HITCH PLATE
1	HO-000410	HOOD
2	PI-000028	PIN - HOOD PIN
2	PI-000032	PIN - LYNCH PIN B7
1	PI-000042	PIN - TEAR DROP PIN
2	PI-000043	PIN - TEAR DROP PIN
1	SC-000004	FRAME ASSEMBLY
2	SC-000146	HOOD CYLINDER ASSEMBLY
2	SC-000061	SCS TYPE 2 / TYPE 4 NYLON BUSH
1	SC-000143	LINKAGE ASSEMBLY
1	SC-000152	AFT DAMPENER
1	SC-000162	SWING CONTROL

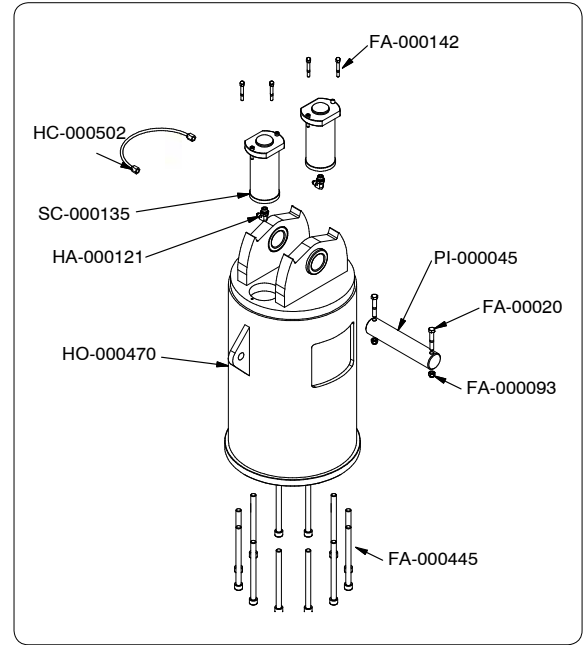
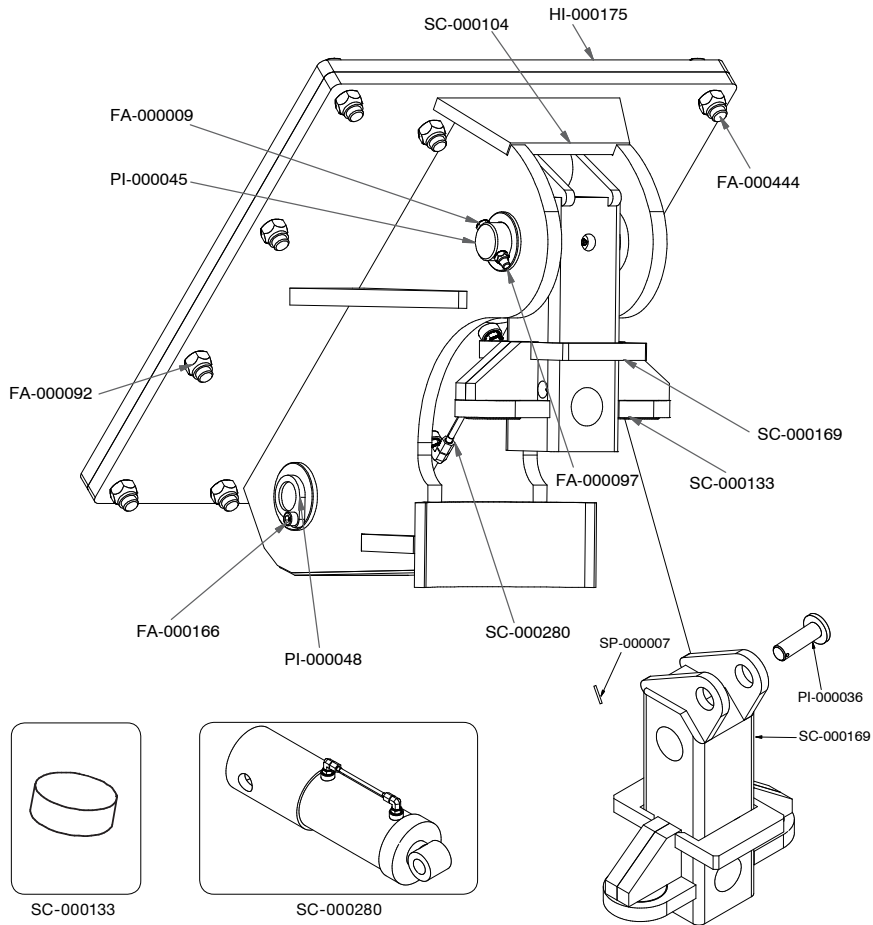
PD12 SCS



PD12 SCS - PARTS LIST

QTY	PART NUMBER	DESCRIPTION
2	FA-000009	BOLT HEX
8	FA-000014	BOLT HEX
12	FA-000092	NUT NYLOC
2	FA-000093	NUT NYLOC
2	FA-000097	NUT NYLOC
4	FA-000142	SCREW SOCKET HD CAP
2	FA-000166	SCREW SOCKET HD CAP
2	FA-000202	BOLT HEX
12	FA-000444	BOLT HEX
12	FA-000465	SCREW SOCKET HD CAP
2	HA-000121	90 DEG - ELBOW
1	HC-000502	TUBE ASSY HOOD CYL
1	HI-000175	HITCH PLATE
2	HO-000041	BUSH
1	HO-000045	HOOD ADPTR RING
1	HO-000194	HOOD PREMIUM DRIVE
1	PI-000036	PIN
1	PI-000045	PIN
2	PI-000048	PIN - TEARDROP
1	SC-000104	FRAME ASSEMBLY
1	SC-000107	TRUNION MOUNT
2	SC-000133	NYLON BUSH
2	SC-000135	HOOD CYLINDER
11	SC-000169	LINKAGE ASSEMBLY
1	SC-000280	TRUNION MOUNT
1	SC-000282	HYDRAULIC LINE ASSEMBLY
1	SP-000007	SPRING PIN

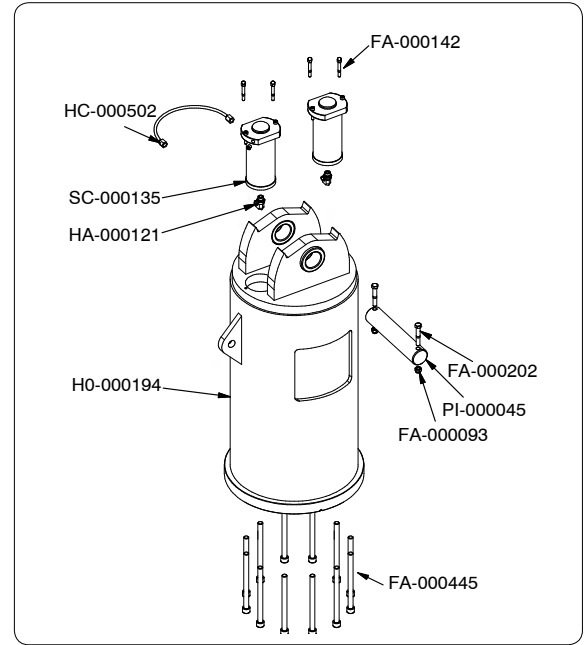
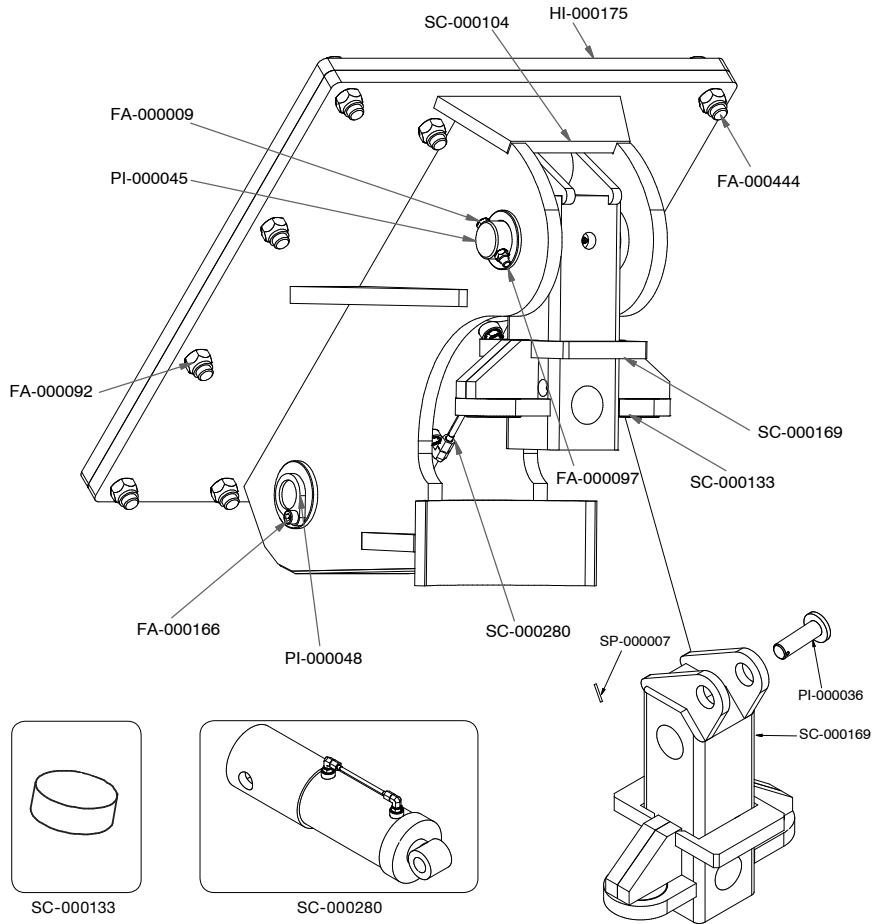
PD15 - PD22 SCS



PD15 - PD22 SCS - PARTS LIST

QTY	PART NUMBER	DESCRIPTION
2	FA-000009	BOLT HEX
12	FA-000092	NUT NYLOC
2	FA-000093	NUT NYLOC
2	FA-000097	NUT NYLOC
4	FA-000142	SCREW SOCKET HD CAP
2	FA-000166	SCREW SOCKET HD CAP
2	FA-000202	BOLT HEX
12	FA-000444	BOLT HEX
12	FA-000445	SCREW SOCKET HD CAP
2	HA-000121	90 DEG - ELBOW
1	HC-000502	TUBE ASSY HOOD CYL
1	HI-000175	HITCH PLATE
2	HO-000041	BUSH
1	HO-000470	HOOD PREMIUM DRIVES
1	PI-000036	PIN
2	PI-000045	PIN
2	PI-000048	PIN - TEARDROP
1	SC-000104	FRAME ASSEMBLY
1	SC-000107	TRUNION MOUNT
2	SC-000133	NYLON BUSH
2	SC-000135	HOOD CYLINDER
1	SC-000169	LINKAGE ASSEMBLY
1	SC-000280	TRUNION MOUNT
1	SC-000282	HYDRAULIC LINE ASSEMBLY
1	SP-000007	SPRING PIN

PD25 - PD50 SCS



PD25 - PD50 SCS - PART LISTS

QTY	PART NUMBER	DESCRIPTION
2	FA-000009	BOLT HEX
12	FA-000081	BOLT HEX
12	FA-000092	NUT NYLOC
2	FA-000093	NUT NYLOC
2	FA-000097	NUT NYLOC
4	FA-000142	SCREW SOCKET
2	FA-000166	SCREW SOCKET
2	FA-000202	BOLT HEX
12	FA-000444	BOLT HEX
2	HA-000121	90 DEG - ELBOW
1	HC-000502	TUBE ASSY HOOD CYL
1	HI-000175	HITCH PLATE
2	HO-000041	BUSH
1	HO-000194	HOOD
1	PI-000036	PIN
2	PI-000045	PIN
2	PI-000048	PIN - TEARDROP
1	SC-000104	FRAME ASSEMBLY
1	SC-000107	TRUNION MOUNT
2	SC-000133	NYLON BUSH
2	SC-000135	HOOD CYLINDER
1	SC-000169	LINKAGE ASSEMBLY
1	SC-000280	TRUNION MOUNT
1	SC-000282	HYDRAULIC LINE ASSEMBLY
1	SP-000007	SPRING PIN

For further information on spare parts please contact one of the Digga sales office below your closest authorised Digga Dealer.

DIGGA INTERNATIONAL SALES OFFICES

ASIA PACIFIC

DIGGA HEAD OFFICE - QUEENSLAND

4 Octal St, Yatala QLD 4207

PH: (07) 3807 3330

EMAIL: info@digga.com

DIGGA NEW SOUTH WALES

Unit 2, 36 Bluett Drive,
Smeaton Grange NSW 2567

PH: 1300 2 DIGGA

EMAIL: nsw@digga.com

DIGGA VICTORIA

27 Metcalf Street,
Dandenong, VIC 3175

PH: 1300 2 DIGGA

EMAIL: vic@digga.com

WEB: www.digga.com

NORTH AMERICA

DIGGA NORTH AMERICA

2325 Industrial Parkway SW
Dyersville IA 52040

PH: + 1 563 875 7915

WEB: www.diggausa.com

EMAIL: info@diggausa.com

EUROPE

DIGGA EUROPE

Unit 6, Smitham Bridge Road
Hungerford Trading Estate,
Hungerford, Berkshire RG17 0QU
England, United Kingdom

PH: +44 (0) 1488 688 550

WEB: www.diggaeurope.com

EMAIL: info@diggaeurope.com



Australian Designed and Manufactured